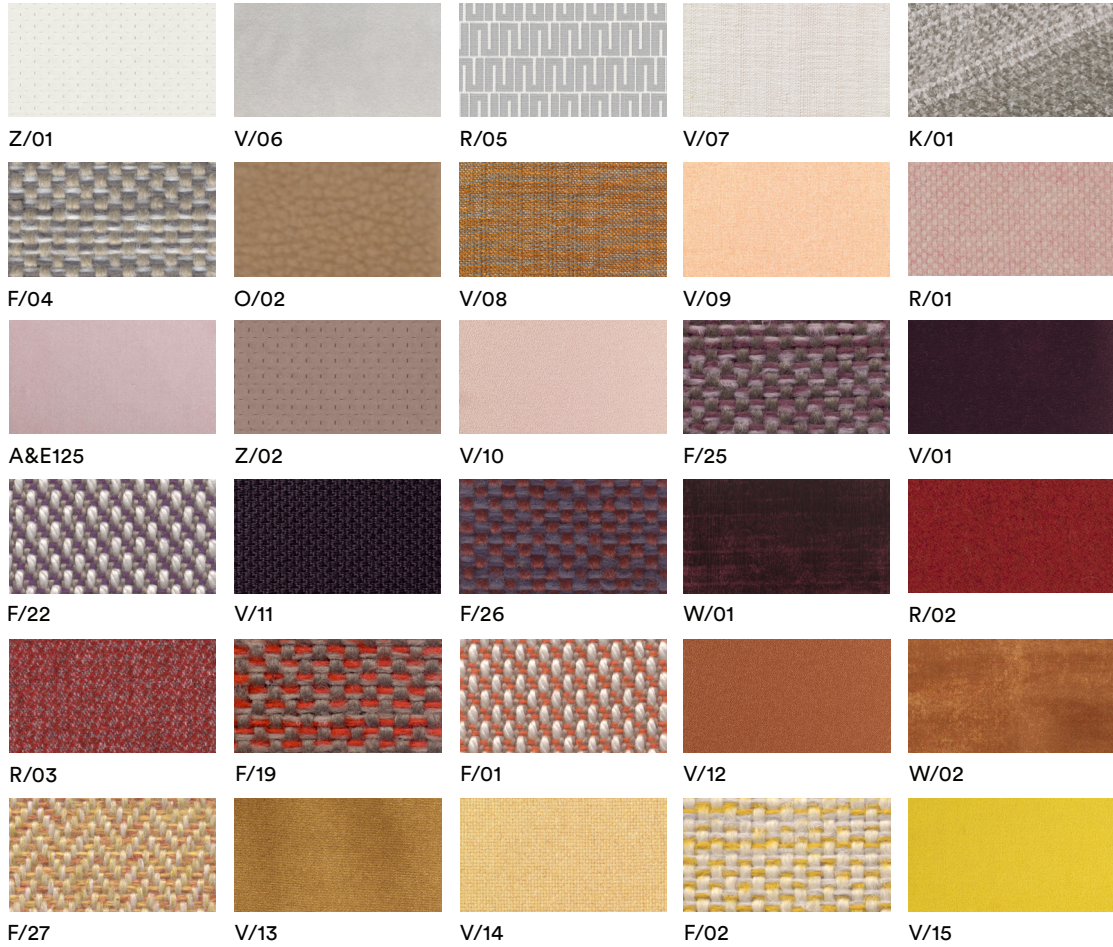


SAMPLES



Fabrics



www.ghyczy.com

office / design center / showroom
reubenberg 25 6071 PS swalmen
+31 (0) 475 50 4422

SAMPLES



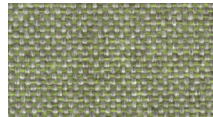
Fabrics



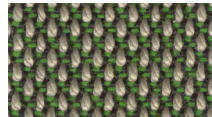
Z/03



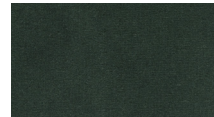
V/16



F/12



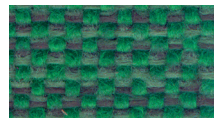
F/18



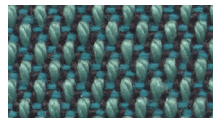
V/05



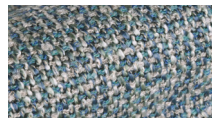
V/17



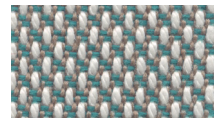
F/09



F/11



K/02



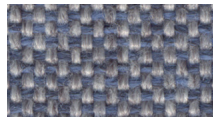
F/10



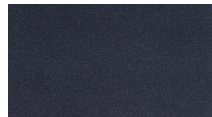
F/06



V/03



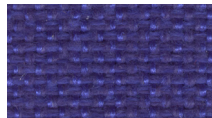
F/21



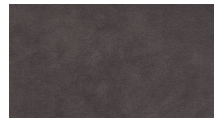
V/18



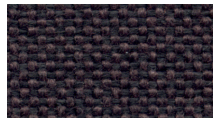
W/03



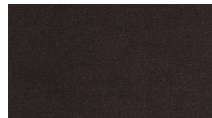
F/24



V/04



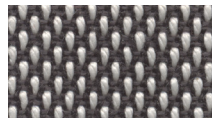
F/20



V/19



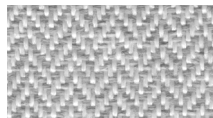
F/17



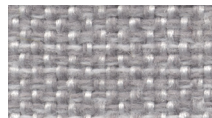
F/08



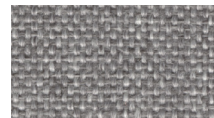
F/28



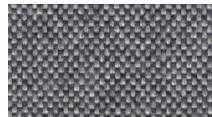
F/29



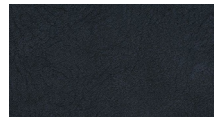
F/30



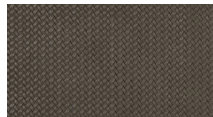
F/14



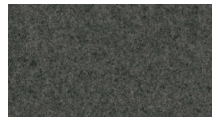
F/15



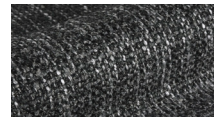
W/04



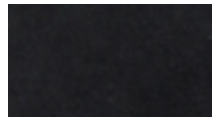
Z/04



R/04



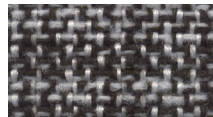
K/03



O/01



F/31



F/13



www.ghyczy.com

office / design center / showroom
reubenberg 25 6071 PS swalmen
+31 (0) 475 50 4422

PROPERTIES

Colour	Code GHYCYZ	Composition	Martindale abrasion	Washability
White	Z/01	100% Polyester		55.000 30°, do not tumble dry, ironing max 110° cool
Light grey	V/06	100% Polyester		50.000 30°, do not tumble dry, do not iron
White/grey	R/05	87% Cotton, 13% Viscose		25.000 Do not wash, do not tumble dry, ironing max 110° cool reverse side
Light beige	V/07	100% polyester		75.000 30°, do not tumble dry, ironing max 150° warm
Beige	K/01	33% Acryl, 30% Viscose, 19% Polyester, 14% Cotton, 4% Linen		40.000 Do not wash, do not tumble dry, ironing max 110° cool
Brown/white	F/04	100% Polyester Trevira CS		100.000 60°, do not tumble dry, ironing max 110° cool
Brown nubuck	O/02	European Bull	Resistance to flexing 20.000	Suede brush of very fine sandpaper
Orange	V/08	100% Polyester		75.000 30°, do not tumble dry, ironing max 150° warm
Salmon	V/09	75% Wool, 20% Polyester, 5% Polyamide	>100.000	Do not wash, do not tumble dry, ironing max 150° warm
Pink	R/01	100% Wool Recycled		40.000 Do not wash, do not tumble dry, ironing max 110° cool
Pink	A&E 125	100% Cotton		50.000 Do not wash, do not tumble dry, ironing max 110° cool reverse side
Pink	Z/02	100% Polyester		55.000 30°, do not tumble dry, ironing max 110° cool
Pink	V/10	100% Polyester		25.000 30°, do not tumble dry, ironing max 150° warm
Purple	F/25	100% Polyester Trevira CS		100.000 60°, do not tumble dry, ironing max 110° cool
Purple	V/01	100% Polyester		50.000 30°, do not tumble dry, do not iron
White/purple	F/22	100% Polyeste Trevira CS		80.000 60°, do not tumble dry, ironing max 110° cool
Dark purple	V/11	100% Polyester		70.000 30°, do not tumble dry, ironing max 150° warm
Purple (blue/red)	F/26	100% Polyester Trevira CS		100.000 60°, do not tumble dry, ironing max 110° cool
Dark red	W/01	70% Viscose, 24% Cotton, 6% Polyester		100.000 Do not wash, do not tumble dry, ironing max 110° cool
Red	R/02	100% Wool Recycled		40.000 Do not wash, do not tumble dry, ironing max 110° cool
Dark red	R/03	100% Wool Recycled		40.000 Do not wash, do not tumble dry, ironing max 110° cool
Red	F/19	100% Polyester Trevira CS		100.000 60°, do not tumble dry, ironing max 110° cool
White/orange	F/01	100% Polyeste Trevira CS		80.000 60°, do not tumble dry, ironing max 110° cool
Copper	V/12	100% Polyester		25.000 30°, do not tumble dry, ironing max 150° warm
Orange	W/02	100% Polyester		100.000 30°, do not tumble dry, ironing required
Orange	F/27	100% Polyester Trevira CS		120.000 60°, do not tumble dry, ironing max 110° cool
Oker	V/13	100% Polyester		50.000 30°, do not tumble dry, do not iron
Yellow orange	V/14	75% Wool, 25% Polyester	>100.000	Do not wash, do not tumble dry, ironing max 150° warm
White/yellow	F/02	100% Polyester Trevira CS		100.000 60°, do not tumble dry, ironing max 110° cool
Yellow	V/15	100% Mohair		90.000 Do not wash, do not tumble dry, do not iron
Grey mint	Z/03	100% Polyester		55.000 30°, do not tumble dry, ironing max 110° cool
Khaki green	V/16	75% Wool, 20% Polyester, 5% Polyamide	>100.000	Do not wash, do not tumble dry, ironing max 150° warm
Light green	F/12	100% Polyester Trevira CS		70.000 60°, do not tumble dry, ironing max 110° cool
White/green	F/18	100% Polyeste Trevira CS		80.000 60°, do not tumble dry, ironing max 110° cool
Green	V/05	100% Polyester		50.000 30°, do not tumble dry, do not iron
Dark green	V/17	100% Polyester		25.000 30°, do not tumble dry, ironing max 150° warm
Green	F/09	100% Polyester Trevira CS		100.000 60°, do not tumble dry, ironing max 110° cool
Blue green	F/11	100% Polyeste Trevira CS		80.000 60°, do not tumble dry, ironing max 110° cool
Blue green	K/02	33% Acryl, 30% Viscose, 19% Polyester, 14% Cotton, 4% Linen		40.000 Do not wash, do not tumble dry, ironing max 110° cool
Light blue green	F/10	100% Polyeste Trevira CS		80.000 60°, do not tumble dry, ironing max 110° cool
Light blue	F/06	100% Polyester Trevira CS		100.000 60°, do not tumble dry, ironing max 110° cool
Light blue	V/03	100% Polyester		50.000 30°, do not tumble dry, do not iron
Blue	F/21	100% Polyester Trevira CS		70.000 60°, do not tumble dry, ironing max 110° cool
Grey blue	V/18	100% Mohair		90.000 Do not wash, do not tumble dry, do not iron
Blue	W/03	56% Viscose, 44% Cotton		45.000 Do not wash, do not tumble dry, ironing max 150° warm reverse side
Bright blue	F/24	100% Polyester Trevira CS		70.000 60°, do not tumble dry, ironing max 110° cool
Purple brown	V/04	100% Polyester		50.000 30°, do not tumble dry, do not iron
Brown	F/20	100% Polyester Trevira CS		70.000 60°, do not tumble dry, ironing max 110° cool
Brown	V/19	100% Mohair		90.000 Do not wash, do not tumble dry, do not iron
Brown	F/17	100% Polyeste Trevira CS		80.000 60°, do not tumble dry, ironing max 110° cool
White/brown	F/08	100% Polyeste Trevira CS		80.000 60°, do not tumble dry, ironing max 110° cool
Light grey	F/28	100% Polyester Trevira CS		100.000 60°, do not tumble dry, ironing max 110° cool
Light grey	F/29	100% Polyester Trevira CS		120.000 60°, do not tumble dry, ironing max 110° cool
Light grey	F/30	100% Polyester Trevira CS		70.000 60°, do not tumble dry, ironing max 110° cool
Light grey	F/14	100% Polyester Trevira CS		70.000 60°, do not tumble dry, ironing max 110° cool
Dark grey	F/15	100% Polyester Trevira CS		70.000 60°, do not tumble dry, ironing max 110° cool
Dark grey	W/04	100% Polyester		100.000 30°, do not tumble dry, do not iron
Woven dark grey	Z/04	100% Polyester, Coating: 95% Polyvinylchloride, 5% Polyurethane		35.000 Do not wash, do not tumble dry, do not iron
Dark grey	R/04	100% Wool Recycled		40.000 Do not wash, do not tumble dry, ironing max 110° cool
Black/grey	K/03	33% Acryl, 30% Viscose, 19% Polyester, 14% Cotton, 4% Linen		40.000 Do not wash, do not tumble dry, ironing max 110° cool
Black nubuck	O/01	European Bull	Resistance to flexing 20.000	Suede brush of very fine sandpaper
Black	F/31	100% Polyester Trevira CS		100.000 60°, do not tumble dry, ironing max 110° cool
Black/white	F/13	100% Polyester Trevira CS		70.000 60°, do not tumble dry, ironing max 110° cool



www.ghyczy.com

office / design center / showroom
reubenberg 25 6071 PS swalmen
+31 (0) 475 50 4422

PROPERTIES / FLAMMABILITY CODE

Colour	Code GHYCZY	Flammability code
White	Z/01	Flame retardant
Light grey	V/06	EN 1021/1-2 NF P 92/503-507, M1 DIN 4102, B1 UNI 9175, classe 1 IMO 2010 FTP part 8 BS 5852, crib 5 - foam 60 BS 5852, crib 5 - foam 36 NFPA 260, class 1
White/grey	R/05	https://www.villanova.co.uk/catalog/catalog/fire-ratings?sku=V3302-03#fire-ratings-V3302-03
Light beige	V/07	EN 1021/1-2 BS 5852, crib 5 NF P 92/503-507, M1 DIN 4102, B1 IMO 2010 FTP part 8 UNI 9175, classe 1 Cal TB 117 NFPA 260, class 1
Beige	K/01	/
Brown/white	F/04	C1 (UNI 9174 - UNI 8456)M1 (NF P 92501-7)B1 (DIN 4102)AM 18 (NF D 60013)CRIB 5 (BS 5852 part II)EN 1021-1&2BS 7176IMO for upholstery Part 8California TB 117USA NFPA 701USA NFPA 260ONORM B 3825-Onorm A 3800-1 Class B1-Q1-TR1EN 137731 IM (UNI 9175)
Brown nubuck	O/02	DIN EN 1021 Part I + II British Standard 5852 1 + 2
Orange	V/08	EN 1021/1-2 BS 5852, crib 5 NF P 92/503-507, M1 DIN 4102, B1 IMO 2010 FTP part 8 UNI 9175, classe 1 Cal TB 117 NFPA 260, class 1
Salmon	V/09	EN 1021/1-2 BS 5852, crib 5 NF P 92/503-507, M2 DIN 4102, B2 IMO 2010 FTP part 8 UNI 9175, classe 1 Cal TB 117 NFPA 260, class 1
Pink	R/01	https://www.kirkbydesign.com/catalog/catalog/fire-ratings?sku=K5126-03#fire-ratings-K5126-03
Pink A&E 125	/	
Pink	Z/02	Flame retardant
Pink	V/10	EN 1021/1-2 BS 5852, crib 5 NF P 92/503-507, M1 DIN 4102, B1 UNI 9175, classe 1 Cal TB 117-2013 NFPA 260, class 1
Purple	F/25	C1 (UNI 9174 - UNI 8456)M1 (NF P 92501-7)B1 (DIN 4102)AM 18 (NF D 60013)CRIB 5 (BS 5852 part II)EN 1021-1&2BS 7176IMO for upholstery Part 8California TB 117USA NFPA 701USA NFPA 260ONORM B 3825-Onorm A 3800-1 Class B1-Q1-TR1EN 137731 IM (UNI 9175)
Purple	V/01	EN 1021/1-2 NF P 92/503-507, M1 DIN 4102, B1 UNI 9175, classe 1 IMO 2010 FTP part 8 BS 5852, crib 5 - foam 60 BS 5852, crib 5 - foam 36 NFPA 260, class 1
White/purple	F/22	C1 (UNI 9174 - UNI 8456)M1 (NF P 92501-7)B1 (DIN 4102)AM 18 (NF D 60013)CRIB 5 (BS 5852 part II)EN 1021-1&2BS 7176IMO for upholstery Part 8California TB 117USA NFPA 701USA NFPA 260ONORM B 3825-Onorm A 3800-1 Class B1-Q1-TR1EN 137731 IM (UNI 9175)
Dark purple	V/11	EN 1021/1-2 BS 5852, crib 5 NF P 92/503-507, M1 DIN 4102, B1 IMO 2010 FTP part 8 UNI 9175, classe 1 Cal TB 117 NFPA 260, class 1
Purple (blue/red)	F/26	C1 (UNI 9174 - UNI 8456)M1 (NF P 92501-7)B1 (DIN 4102)AM 18 (NF D 60013)CRIB 5 (BS 5852 part II)EN 1021-1&2BS 7176IMO for upholstery Part 8California TB 117USA NFPA 701USA NFPA 260ONORM B 3825-Onorm A 3800-1 Class B1-Q1-TR1EN 137731 IM (UNI 9175)
Dark red	W/01	C + M, can be backcoated
Red	R/02	https://www.kirkbydesign.com/catalog/catalog/fire-ratings?sku=K5125-32#fire-ratings-K5125-32
Dark red	R/03	https://www.kirkbydesign.com/catalog/catalog/fire-ratings?sku=K5127-05#fire-ratings-K5127-05
Red	F/19	C1 (UNI 9174 - UNI 8456)M1 (NF P 92501-7)B1 (DIN 4102)AM 18 (NF D 60013)CRIB 5 (BS 5852 part II)EN 1021-1&2BS 7176IMO for upholstery Part 8California TB 117USA NFPA 701USA NFPA 260ONORM B 3825-Onorm A 3800-1 Class B1-Q1-TR1EN 137731 IM (UNI 9175)
White/orange	F/01	C1 (UNI 9174 - UNI 8456)M1 (NF P 92501-7)B1 (DIN 4102)AM 18 (NF D 60013)CRIB 5 (BS 5852 part II)EN 1021-1&2BS 7176IMO for upholstery Part 8California TB 117USA NFPA 701USA NFPA 260ONORM B 3825-Onorm A 3800-1 Class B1-Q1-TR1EN 137731 IM (UNI 9175)
Copper	V/12	EN 1021/1-2 BS 5852, crib 5 NF P 92/503-507, M1 DIN 4102, B1 UNI 9175, classe 1 Cal TB 117 NFPA 260, class 1
Orange	W/02	Z, must be backcoated
Orange	F/27	C1 (UNI 9174 - UNI 8456)M1 (NF P 92501-7)B1 (DIN 4102)AM 18 (NF D 60013)CRIB 5 (BS 5852 part II)EN 1021-1&2BS 7176IMO for upholstery Part 8California TB 117USA NFPA 701USA NFPA 260ONORM B 3825-Onorm A 3800-1 Class B1-Q1-TR1EN 137731 IM (UNI 9175)
Oker	V/13	EN 1021/1-2 NF P 92/503-507, M1 DIN 4102, B1 UNI 9175, classe 1 IMO 2010 FTP part 8 BS 5852, crib 5 - foam 60 BS 5852, crib 5 - foam 36 NFPA 260, class 1
Yellow orange	V/14	EN 1021/1-2 BS 5852, crib 5 NF P 92/503-507, M2 DIN 4102, B2 IMO 2010 FTP part 8 UNI 9175, classe 1 Cal TB 117 NFPA 260, class 1
White/yellow	F/02	C1 (UNI 9174 - UNI 8456)M1 (NF P 92501-7)B1 (DIN 4102)AM 18 (NF D 60013)CRIB 5 (BS 5852 part II)EN 1021-1&2BS 7176IMO for upholstery Part 8California TB 117USA NFPA 701USA NFPA 260ONORM B 3825-Onorm A 3800-1 Class B1-Q1-TR1EN 137731 IM (UNI 9175)
Yellow	V/15	EN 1021/1-2 BS 5852, crib 5 DIN 4102, B2 IMO 2010 FTP part 8 UNI 9175, classe 1 NFPA 260, class 1
Grey mint	Z/03	Flame retardant
khaki green	V/16	EN 1021/1-2 BS 5852, crib 5 NF P 92/503-507, M2 DIN 4102, B2 IMO 2010 FTP part 8 UNI 9175, classe 1 Cal TB 117 NFPA 260, class 1
Light green	F/12	C1 (UNI 9174 - UNI 8456)M1 (NF P 92501-7)B1 (DIN 4102)AM 18 (NF D 60013)CRIB 5 (BS 5852 part II)EN 1021-1&2BS 7176IMO for upholstery Part 8California TB 117USA NFPA 701USA NFPA 260ONORM B 3825-Onorm A 3800-1 Class B1-Q1-TR1EN 137731 IM (UNI 9175)
White/green	F/18	C1 (UNI 9174 - UNI 8456)M1 (NF P 92501-7)B1 (DIN 4102)AM 18 (NF D 60013)CRIB 5 (BS 5852 part II)EN 1021-1&2BS 7176IMO for upholstery Part 8California TB 117USA NFPA 701USA NFPA 260ONORM B 3825-Onorm A 3800-1 Class B1-Q1-TR1EN 137731 IM (UNI 9175)
Green	V/05	EN 1021/1-2 NF P 92/503-507, M1 DIN 4102, B1 UNI 9175, classe 1 IMO 2010 FTP part 8 BS 5852, crib 5 - foam 60 BS 5852, crib 5 - foam 36 NFPA 260, class 1
Dark green	V/17	EN 1021/1-2 BS 5852, crib 5 NF P 92/503-507, M1 DIN 4102, B1 UNI 9175, classe 1 Cal TB 117-2013 NFPA 260, class 1
Green	F/09	C1 (UNI 9174 - UNI 8456)M1 (NF P 92501-7)B1 (DIN 4102)AM 18 (NF D 60013)CRIB 5 (BS 5852 part II)EN 1021-1&2BS 7176IMO for upholstery Part 8California TB 117USA NFPA 701USA NFPA 260ONORM B 3825-Onorm A 3800-1 Class B1-Q1-TR1EN 137731 IM (UNI 9175)
Blue green	F/11	C1 (UNI 9174 - UNI 8456)M1 (NF P 92501-7)B1 (DIN 4102)AM 18 (NF D 60013)CRIB 5 (BS 5852 part II)EN 1021-1&2BS 7176IMO for upholstery Part 8California TB 117USA NFPA 701USA NFPA 260ONORM B 3825-Onorm A 3800-1 Class B1-Q1-TR1EN 137731 IM (UNI 9175)
Blue green	K/02	/
Light blue green	F/10	C1 (UNI 9174 - UNI 8456)M1 (NF P 92501-7)B1 (DIN 4102)AM 18 (NF D 60013)CRIB 5 (BS 5852 part II)EN 1021-1&2BS 7176IMO for upholstery Part 8California TB 117USA NFPA 701USA NFPA 260ONORM B 3825-Onorm A 3800-1 Class B1-Q1-TR1EN 137731 IM (UNI 9175)
Light blue	F/06	C1 (UNI 9174 - UNI 8456)M1 (NF P 92501-7)B1 (DIN 4102)AM 18 (NF D 60013)CRIB 5 (BS 5852 part II)EN 1021-1&2BS 7176IMO for upholstery Part 8California TB 117USA NFPA 701USA NFPA 260ONORM B 3825-Onorm A 3800-1 Class B1-Q1-TR1EN 137731 IM (UNI 9175)
Light blue	V/03	EN 1021/1-2 NF P 92/503-507, M1 DIN 4102, B1 UNI 9175, classe 1 IMO 2010 FTP part 8 BS 5852, crib 5 - foam 60 BS 5852, crib 5 - foam 36 NFPA 260, class 1
Blue	F/21	C1 (UNI 9174 - UNI 8456)M1 (NF P 92501-7)B1 (DIN 4102)AM 18 (NF D 60013)CRIB 5 (BS 5852 part II)EN 1021-1&2BS 7176IMO for upholstery Part 8California TB 117USA NFPA 701USA NFPA 260ONORM B 3825-Onorm A 3800-1 Class B1-Q1-TR1EN 137731 IM (UNI 9175)
Grey blue	V/18	EN 1021/1-2 BS 5852, crib 5 DIN 4102, B2 IMO 2010 FTP part 8 UNI 9175, classe 1 NFPA 260, class 1
Blue	W/03	C + M, can be backcoated
Bright blue	F/24	C1 (UNI 9174 - UNI 8456)M1 (NF P 92501-7)B1 (DIN 4102)AM 18 (NF D 60013)CRIB 5 (BS 5852 part II)EN 1021-1&2BS 7176IMO for upholstery Part 8California TB 117USA NFPA 701USA NFPA 260ONORM B 3825-Onorm A 3800-1 Class B1-Q1-TR1EN 137731 IM (UNI 9175)
Purple brown	V/04	EN 1021/1-2 NF P 92/503-507, M1 DIN 4102, B1 UNI 9175, classe 1 IMO 2010 FTP part 8 BS 5852, crib 5 - foam 60 BS 5852, crib 5 - foam 36 NFPA 260, class 1
Brown	F/20	C1 (UNI 9174 - UNI 8456)M1 (NF P 92501-7)B1 (DIN 4102)AM 18 (NF D 60013)CRIB 5 (BS 5852 part II)EN 1021-1&2BS 7176IMO for upholstery Part 8California TB 117USA NFPA 701USA NFPA 260ONORM B 3825-Onorm A 3800-1 Class B1-Q1-TR1EN 137731 IM (UNI 9175)
Brown	V/19	EN 1021/1-2 BS 5852, crib 5 DIN 4102, B2 IMO 2010 FTP part 8 UNI 9175, classe 1 NFPA 260, class 1
Brown	F/17	C1 (UNI 9174 - UNI 8456)M1 (NF P 92501-7)B1 (DIN 4102)AM 18 (NF D 60013)CRIB 5 (BS 5852 part II)EN 1021-1&2BS 7176IMO for upholstery Part 8California TB 117USA NFPA 701USA NFPA 260ONORM B 3825-Onorm A 3800-1 Class B1-Q1-TR1EN 137731 IM (UNI 9175)
White/brown	F/08	C1 (UNI 9174 - UNI 8456)M1 (NF P 92501-7)B1 (DIN 4102)AM 18 (NF D 60013)CRIB 5 (BS 5852 part II)EN 1021-1&2BS 7176IMO for upholstery Part 8California TB 117USA NFPA 701USA NFPA 260ONORM B 3825-Onorm A 3800-1 Class B1-Q1-TR1EN 137731 IM (UNI 9175)
Light grey	F/28	C1 (UNI 9174 - UNI 8456)M1 (NF P 92501-7)B1 (DIN 4102)AM 18 (NF D 60013)CRIB 5 (BS 5852 part II)EN 1021-1&2BS 7176IMO for upholstery Part 8California TB 117USA NFPA 701USA NFPA 260ONORM B 3825-Onorm A 3800-1 Class B1-Q1-TR1EN 137731 IM (UNI 9175)
Light grey	F/29	C1 (UNI 9174 - UNI 8456)M1 (NF P 92501-7)B1 (DIN 4102)AM 18 (NF D 60013)CRIB 5 (BS 5852 part II)EN 1021-1&2BS 7176IMO for upholstery Part 8California TB 117USA NFPA 701USA NFPA 260ONORM B 3825-Onorm A 3800-1 Class B1-Q1-TR1EN 137731 IM (UNI 9175)
Light grey	F/30	C1 (UNI 9174 - UNI 8456)M1 (NF P 92501-7)B1 (DIN 4102)AM 18 (NF D 60013)CRIB 5 (BS 5852 part II)EN 1021-1&2BS 7176IMO for upholstery Part 8California TB 117USA NFPA 701USA NFPA 260ONORM B 3825-Onorm A 3800-1 Class B1-Q1-TR1EN 137731 IM (UNI 9175)
Light grey	F/14	C1 (UNI 9174 - UNI 8456)M1 (NF P 92501-7)B1 (DIN 4102)AM 18 (NF D 60013)CRIB 5 (BS 5852 part II)EN 1021-1&2BS 7176IMO for upholstery Part 8California TB 117USA NFPA 701USA NFPA 260ONORM B 3825-Onorm A 3800-1 Class B1-Q1-TR1EN 137731 IM (UNI 9175)
Dark grey	F/15	C1 (UNI 9174 - UNI 8456)M1 (NF P 92501-7)B1 (DIN 4102)AM 18 (NF D 60013)CRIB 5 (BS 5852 part II)EN 1021-1&2BS 7176IMO for upholstery Part 8California TB 117USA NFPA 701USA NFPA 260ONORM B 3825-Onorm A 3800-1 Class B1-Q1-TR1EN 137731 IM (UNI 9175)
Dark grey	W/04	Z, must be backcoated
Woven dark grey	Z/04	Flame retardant
Dark grey	R/04	https://www.kirkbydesign.com/catalog/catalog/fire-ratings?sku=K5125-32#fire-ratings-K5125-32
Black/grey	K/03	/
Black nubuck	O/01	DIN EN 1021 Part I + II British Standard 5852 1 + 2
Black	F/31	C1 (UNI 9174 - UNI 8456)M1 (NF P 92501-7)B1 (DIN 4102)AM 18 (NF D 60013)CRIB 5 (BS 5852 part II)EN 1021-1&2BS 7176IMO for upholstery Part 8California TB 117USA NFPA 701USA NFPA 260ONORM B 3825-Onorm A 3800-1 Class B1-Q1-TR1EN 137731 IM (UNI 9175)
Black/white	F/13	C1 (UNI 9174 - UNI 8456)M1 (NF P 92501-7)B1 (DIN 4102)AM 18 (NF D 60013)CRIB 5 (BS 5852 part II)EN 1021-1&2BS 7176IMO for upholstery Part 8California TB 117USA NFPA 701USA NFPA 260ONORM B 3825-Onorm A 3800-1 Class B1-Q1-TR1EN 137731 IM (UNI 9175)



www.ghyczy.com

office / design center / showroom
reubenberg 25 6071 PS swalmen
+31 (0) 475 50 4422