



orSenigo

orfenigo home

Sia a casa che in ufficio, tutti cerchiamo autenticità
e identità nello spazio che ci circonda.

Whether in your home or at the office, we all look for
authenticity and identity in our living space.

Ob zu Hause oder im Büro, wir alle suchen
Authentizität und Identität in unserem Wohnraum.

SINCE
1960
 DESIGNED & MADE IN ITALY



Fondata nel 1960 dai fratelli Orsenigo, l'azienda nasce come laboratorio artigianale improntato sulla lavorazione dei metalli nell'arredo. Presente nel panorama del design mondiale partecipa al Salone del Mobile fin dalla sua prima edizione nel 1961.

La passione per la perfezione e la cura del dettaglio, la ricerca costante nella scelta dei materiali e delle lavorazioni, sono alla base della filosofia aziendale fin dagli inizi; è proprio grazie a questa attenzione particolare nei confronti del prodotto che il Gruppo Orsenigo si distingue nel panorama mondiale per l'elevata qualità e l'unicità dei suoi pezzi.

Un lungo cammino, che si estende da oltre 60 anni, fatto di rispetto per la vocazione artigianale con sguardo attento alle innovazioni tecnologiche sempre volte a migliorare la qualità ed il risultato finale, porta il Gruppo Orsenigo ad una storia di successo internazionale.

Founded in 1960 by the Orsenigo brothers, the company was born as an artisan workshop based on the working of metals in the furniture field. Present on the world design scene, it has been part in the Salone del Mobile since its first edition in 1961.

The passion for perfection and attention to detail, just as the constant research in the choice of materials and workmanship, have been the basis of the company philosophy from the very beginning. It is thanks to this particular attention to the product that the Orsenigo Group stands out on the world scene for the high quality and uniqueness of its pieces. A long journey, which has been going on for over 60 years, made of respect for the artisan vocation with an attentive eye to technological innovations always aimed at improving the quality and the final result, leads the Orsenigo Group to international success.

Im Jahr 1960 entstand das Orsenigo Unternehmen, das von den Brüdern Orsenigo gegründet wurde, als Handwerksbetrieb, der sich auf die Verarbeitung von Metallen in Möbeln konzentriert. Die Firma ist in der weltweiten Designlandschaft bekannt und nahm bereits im Jahr 1961 am ersten "Salone del Mobile" teil und präsentiert sich bis heute dort. Die Leidenschaft für Perfektion, die ständige Suche nach Details, die sorgfältige Auswahl der Rohstoffe und die Arbeitsverfahren streben eine höchstmögliche Qualität der Möbel an. Diese Ideale sind die Grundlage unserer Philosophie, die die Firma F.lli ORSENIGO dazu gebracht hat, sich in der Welt durch die Einzigartigkeit ihrer Möbel hervorzuheben. Über 60 Jahre Erfahrung sind das Erfolgsgeheimnis des Unternehmens. Ein langer Weg, der zurückgelegt wurde, ohne ihre handwerklichen Fähigkeiten zu kompromittieren, aber zur gleichen Zeit die neuesten technologischen Innovationen mit

Blick auf die Verbesserung der Endproduktion zu verbinden.

ORSENIGO-Produkte entstehen heute in einem Gebäude, das sich über eine Fläche von 5.000 Quadratmetern erstreckt, wo die Edelmetalle verarbeitet werden. Die Realisierung umfasst den galvanischen Prozess, der vollständig vor Ort durchgeführt wird, unter Beachtung der notwendigen Parameter für eine umweltbewusste Produktion und den Schutz der Umwelt, bei der die Liebe zum Detail und das maßgeschneiderte Design der Teile entscheidend bleiben, um dem Kunden ein Design zu bieten, das 100% Made in Italy ist. Es gibt zahlreiche Kooperationen mit Architekten und Designern bei der Gestaltung von Möbeln, um dem Kunden ein Produkt zu liefern, das den Trends entspricht, aber gleichzeitig «zeitlos» ist, das dazu bestimmt ist, langlebig zu sein und die Räume zu verschönern. Die Orsenigo-Gruppe realisiert auf ihre erfolgreiche Art öffentliche und private Aufträge.

Today Orsenigo products come to life in a structure that extends over an area of 5000 square meters that welcomes the processing of precious metals, including the galvanic finish made entirely in-house, in order to protect the environment, respecting the parameters necessary for a conscious production, in which the exasperated attention to detail and the sartorial design of the pieces remain fundamental to provide the customer with a 100% made in Italy design.

There are numerous collaborations with architects and designers for the design of furnishings, to provide the customer with a product in line with trends but which is at the same time "timeless", destined to last and embellish spaces. All this leads the Orsenigo Group to make its way in the creation of public and private contracts.

I prodotti Orsenigo oggi prendono vita in una struttura che si estende su una superficie di 5000 metri quadri che accoglie la lavorazione dei metalli pregiati, compresa la finitura galvanica realizzata interamente in sede, nella tutela dell'ambiente e rispettando i parametri necessari per una produzione consapevole, in cui rimane fondamentale l'esasperata cura dei particolari ed il design sartoriale dei pezzi per fornire al cliente un design 100% made in Italy.

Numerose sono le collaborazioni con architetti e designer per la progettazione degli arredi, per fornire al cliente un prodotto in linea con le tendenze ma che sia allo stesso modo "senza tempo", destinato a durare ed impreziosire gli spazi. Tutto questo porta il gruppo Orsenigo a farsi strada nella realizzazione di contract pubblici e privati.

TAVOLI_dining tables	Spider	12
	Ring	14
	Flow	18
	Grandangolo	20
	Sushi	24
	Bull	28
	Kyoto	30
	Intrigo	36
	Air	40
	SEDUTE_seatings	Chazuka
Emme		48
Soft		50
In&Out		54
Fujiyama		58
Ics		64
Pyro		66
Paco		68
Peder		70
TAVOLINI_side tables		Ring
	Spider	80
	Flow	82
	Grandangolo	86
	Sushi	90
	Intrigo	94
	Girabox	98
	Bridge	100
	Time	102
	Tempura	104
	Plomb	106
	Cross	108
	Plate	110
	Basket	114
	Bubble	120
LIBRERIE_bookcases	Tangram	124
	Infinity	126
	Slide	130
	Tao	136
	MADIE_sideboards	Ring
CONSOLLE_consoles	Ring	144
	Spider	148
	Grandangolo	152
	Sushi	154
	Martin	158
SCRIVANIA_writing desk	Desk	160
	Flat	164
SPECCHI_mirrors	Ring	166
	Grandangolo	168
PORTA ABITI_clothes hanger	Gerla	170

TAVOLI
dining tables



Struttura in metallo pieno curvato,
top in vetro temperato o ceramica
(disponibile anche per esterno)

Curved solid metal structure,
tempered glass or ceramic top
(also available for outdoor)

Struktur aus gebogenem Vollmetall,
Platte aus gehärtetem
Glas oder Keramik (auch für
den Aussenbereich erhältlich)

SPIDER

design by Umberto Asnago





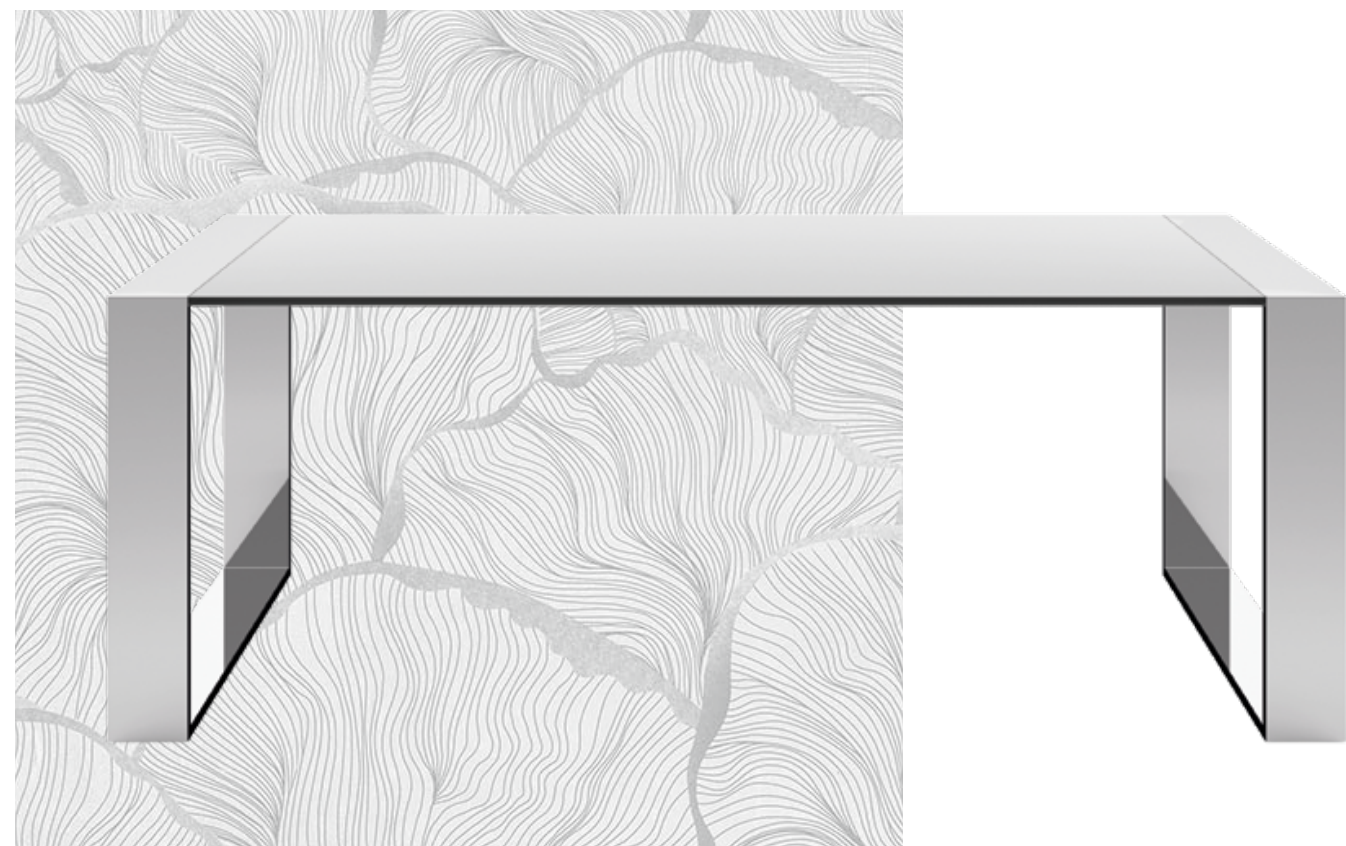
RING

design by Mauro Lipparini

Struttura in tubolare di metallo rinforzato, top in vetro temperato o ceramica

Reinforced metal tubular structure, tempered glass or ceramic top

Stahlrohrstruktur aus verstärktem Metall, Platte aus gehärtetem Glas oder Keramik





Struttura in metallo pieno curvato a caldo, top in vetro temperato o ceramica

Hot-bent solid metal structure, tempered glass or ceramic top

Struktur aus warm gebogenem Vollmetall, Platte aus gehärtetem Glas oder Keramik

FLOW

design by Florian Gypser







GRANDA

design by Studio Orsenigo

ANGOLO

Struttura in tubolare di metallo con inserti in rovere massello, top in vetro temperato o ceramica (disponibile anche per esterno)

Tubular metal structure with solid oak inserts, tempered glass or ceramic top (also available for outdoor)

Stahlrohrstruktur aus verstärktem Metall mit massiven Eiche Einsätzen, Platte aus gehärtetem Glas oder Keramik (auch für den Aussenbereich erhältlich)



Struttura in metallo pieno, top in
vetro temperato, ceramica, marmo
(disponibile anche per esterno)

Solid metal structure, tempered
glass, ceramic or marble top
(also available for outdoor)

Struktur aus Vollmetall, Platte aus
gehärtetem Glas, Keramik oder Marmor
(auch für den Aussenbereich erhältlich)

SUSHI

design by Umberto Asnago





Struttura in lamiera piegata rinforzata, top a forma di botte in ceramica su supporto in MDF laccato, versione estendibile con apertura sincronizzata del top

Folded reinforced sheet metal structure, ceramic barrel-shaped top on lacquered MDF support, extendable version with synchronized opening of the top

Struktur aus gefalteten Stahlblech. Top aus Keramik in Form von Fässern auf Träger aus lackiertem MDF. Auch in ausziehbarer Version mit synchronisierter Öffnung der Platte



BULL

design by Studio Orsenigo





Struttura in metallo pieno, top in legno o ardesia su supporto di MDF, versione estendibile con prolunga in tinta al top

Full metal structure, wooden or slate top on MDF support, extendable version with extension matching the top

Struktur aus Vollmetall, Platte aus Holz oder Schiefer auf MDF-Unterstützung. Erhältlich mit Verlängerung im Einklang mit der Platte

KYOTO

design by Umberto Asnago







INTRIGO

design by Giovanna Azzarello

Struttura in tubolare di metallo combinabile in due colori, top versione rettangolare con lati curvati in vetro temperato o ceramica su supporto in MDF laccato (disponibile anche per esterno)

Metal tubular structure combinable in two colors, rectangular top version with curved sides in tempered glass or ceramic on lacquered MDF support (also available for outdoor)

Struktur aus Metallrohr mit der Möglichkeit der zweifarbigen. Top auch rechteckig mit gebogenen Seiten, Platte aus gehärtetem Glas, Keramik auf lackiertem MDF Träger (auch für den Aussenbereich erhältlich)







Struttura in tubolare di metallo curvato, top in vetro temperato o ceramica su supporto in MDF laccato (disponibile anche per esterno)

Curved metal tubular structure, tempered glass or ceramic top on lacquered MDF support (also available for outdoor)

Struktur aus gebogenem Metallrohr, Platte aus gehärtetem Glas, Keramik auf lackiertem MDF Träger (auch für den Aussenbereich erhältlich)

AIR

design by Tonetti Design



SEDUTE
seatings

CHAZUKA

design by Umberto Asnago

Struttura in tubolare metallo quadro, seduta e schienale in cuoio con cuciture a vista

Square metal tubular structure, seat and backrest in saddle leather with visible stitching

Struktur aus quadratische Metallrohr, Sitz und Rückenlehne aus Leder mit sichtbaren Nähten





Struttura in metallo, scocca stampata in poliuretano espanso, rivestimento in pelle o tessuto

Metal structure, molded shell in polyurethane foam, upholstery in leather or fabric

Struktur aus Metall. bedruckte Sitzschale aus Polyurethanschaum Leder oder Stoffbeschichtung.

EMME

design by Massimo Malacrida





Struttura in metallo semiovale, seduta e schienale in poliuretano espanso rivestiti in pelle o tessuto

Semi-oval metal structure, seat and backrest in polyurethane foam covered in leather or fabric

Struktur aus halboval Metall, Sitz und Rückenlehne aus Polyurethanschaum mit Leder oder Stoff bezogen

SOFT

design by Fabio Besana



IN&OUT

design by Tonetti Design

Struttura in tubolare di metallo laccato, corde in cotone trattato per esterno, versione con struttura tutta di metallo e rivestimento in pelle imbottita con cuscino removibile (disponibile anche per esterno)

Lacquered metal tubular structure, cotton ropes treated for outdoor use, all-metal structure version and padded leather upholstery with removable cushion (also available for outdoor)

Struktur aus lackiertem Metallrohr, Seile aus behandelter Baumwolle für den Aussenbereich. auch mit Ganzmetallgestell und gepolstertem Lederbezug mit abnehmbarem Sitzkissen (Outdoor-Version)







Struttura in metallo pieno, seduta e schienale imbottiti con poliuretano espanso a densità differenziate, disponibile in pelle o tessuto braccioli optional con curve morbide in massello di rovere tinto

Solid metal structure, seat and backrest padded with differentiated density polyurethane foam, available in leather or fabric, optional armrests with soft curves in solid stained oak

Struktur aus Vollmetall, Sitz und Rückenlehne gepolstert mit Polyurethanschaum mit unterschiedlicher Dichte, in Leder oder Stoff, extra: Armlehnen aus massiver gefärbt Eiche

FUJIYAMA

design by Umberto Asnago



FUJIYAMA

design by Umberto Asnago

Struttura in metallo pieno, seduta e schienale imbottiti con poliuretano espanso a densità differenziate, disponibile in pelle o tessuto braccioli optional con curve morbide in massello di rovere tinto

Solid metal structure, seat and backrest padded with differentiated density polyurethane foam, available in leather or fabric, optional armrests with soft curves in solid stained oak

Struktur aus Vollmetall, Sitz und Rückenlehne gepolstert mit Polyurethanschaum mit unterschiedlicher Dichte, in Leder oder Stoff, extra: Armlehnen aus massiver gefärbt Eiche



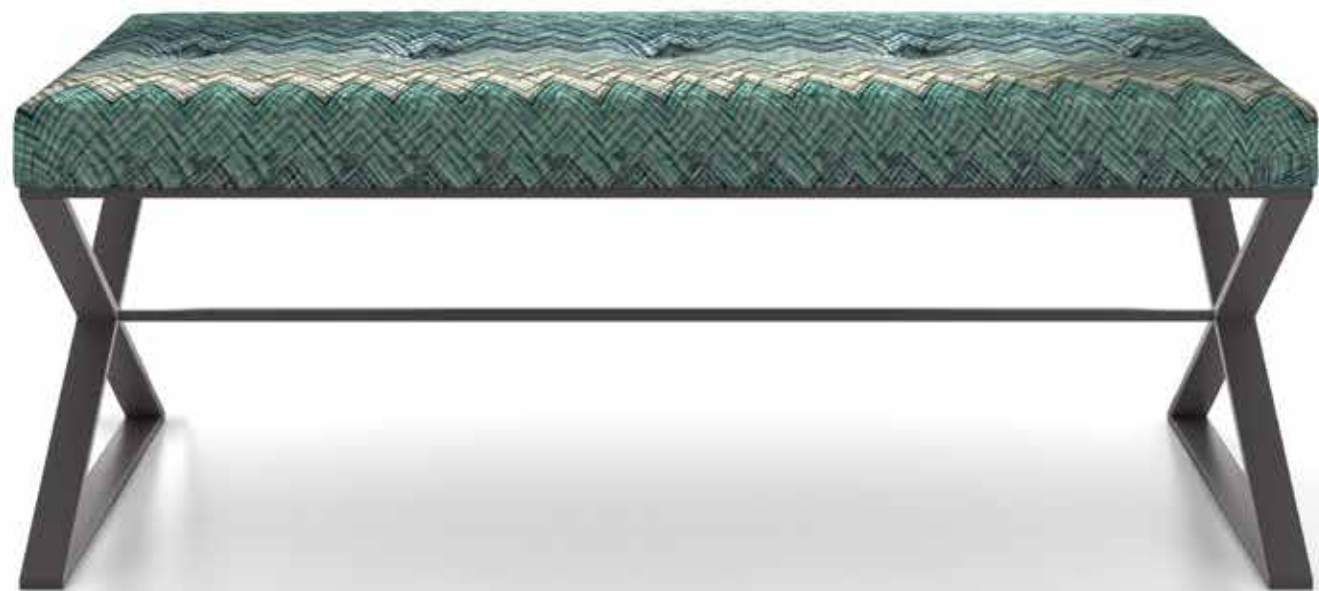


Struttura in tubolare di metallo,
seduta in MDF imbottita con
poliuretano espanso e rivestita
in pelle o tessuto, a scelta
versione con o senza bottoni

Tubular metal structure, seat in
MDF padded with polyurethane
foam and covered in leather or
fabric, version with or without
buttons as desire

Struktur aus Metallrohr,
Sitz und Rückenlehne aus
Polyurethanschaum mit Leder
oder Stoff bezogen. Wahlweise
mit oder ohne Knöpfe

ICS
design by Studio Orsenigo





PYRO

design by Umberto Asnago

Struttura in legno imbottito con poliuretano espanso, decoro in metallo semiovale, rivestimento in pelle o tessuto

Wooden structure padded with polyurethane foam, decoration in semi-oval metal, upholstery in leather or fabric

Holzstruktur gepolstert mit Polyurethanschaum. Halbovale Metallverzierung. In Leder oder Stoff bezogen



Struttura in legno imbottito con poliuretano espanso rivestito in pelle o tessuto , base in lamiera di metallo

Wooden structure padded with polyurethane foam, upholstered in leather or fabric, metal sheet base

Holzstruktur gepolstert mit Polyurethanschaum mit Leder oder Stoff bezogen. Sockel aus Metallblech

PACO

design by Studio Orsenigo





PEDER

design by Massimo Malacrida

Struttura in legno imbottito con poliuretano espanso rivestito in pelle o tessuto, base e schienale in lamiera di metallo

Wooden structure padded with polyurethane foam, upholstered in leather or fabric, metal sheet base and backrest

Holzstruktur gepolstert mit Polyurethanschaum mit Leder oder Stoff bezogen. Sockel und Rückenlehne aus Metallblech



TAVOLINI
side tables



Struttura in metallo pieno, top in vetro temperato, ceramica o marmo

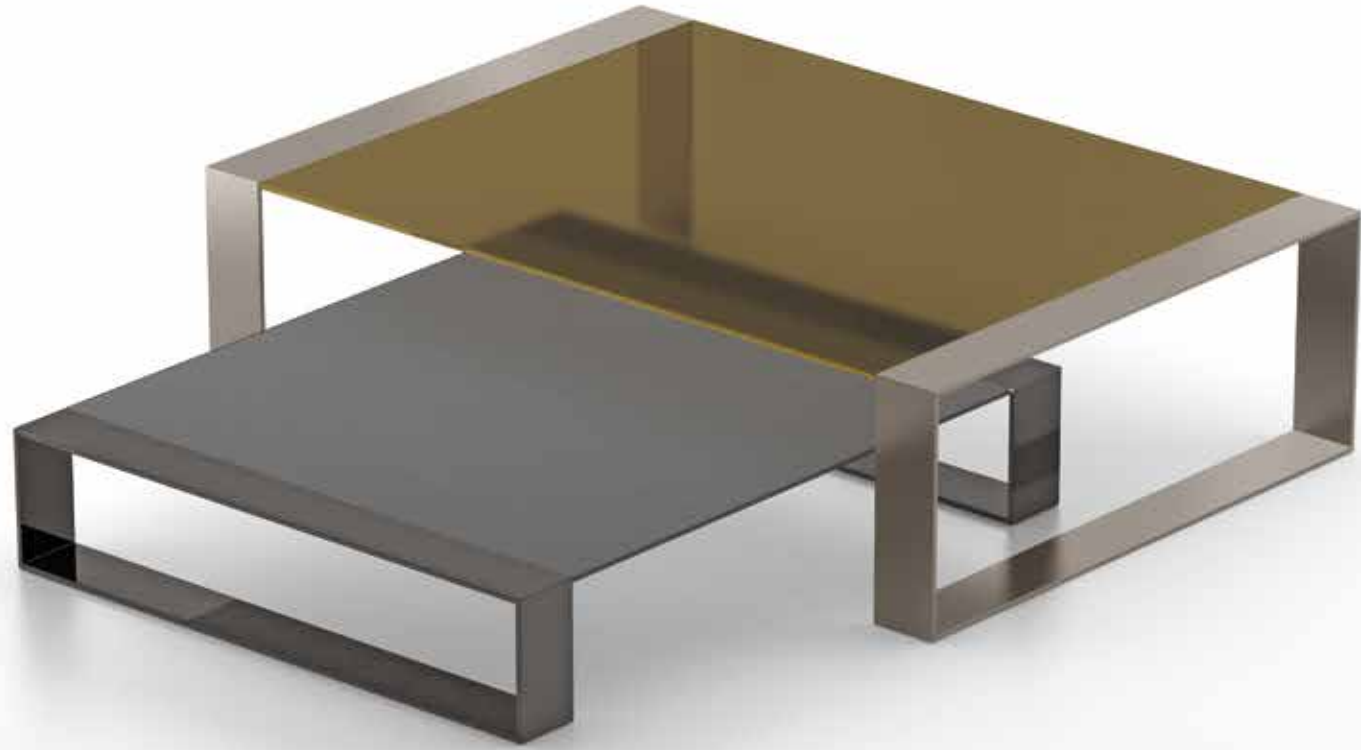
Full metal structure, tempered glass, ceramic or marble top

Struktur aus Vollmetall, Platte aus gehärtetem Glas, Keramik oder Marmor

RING

design by Mauro Lipparini







SPIDER

design by Umberto Asnago

Struttura in metallo pieno curvato,
top in vetro temperato o ceramica
(disponibile anche per esterno)

Full curved metal structure, top
in tempered glass or ceramic
(also available for outdoor)

Struktur aus gebogenem Vollmetall,
Platte aus gehärtetem Glas oder
Keramik (auch für den Aussenbereich
erhältlich)





FLOW

design by Florian Gypser

Struttura in metallo pieno curvato a caldo, top in vetro temperato o ceramica

Hot-bent solid metal structure, tempered glass or ceramic top

Struktur aus warm gebogenem Vollmetall, Platte aus gehärtetem Glas oder Keramik





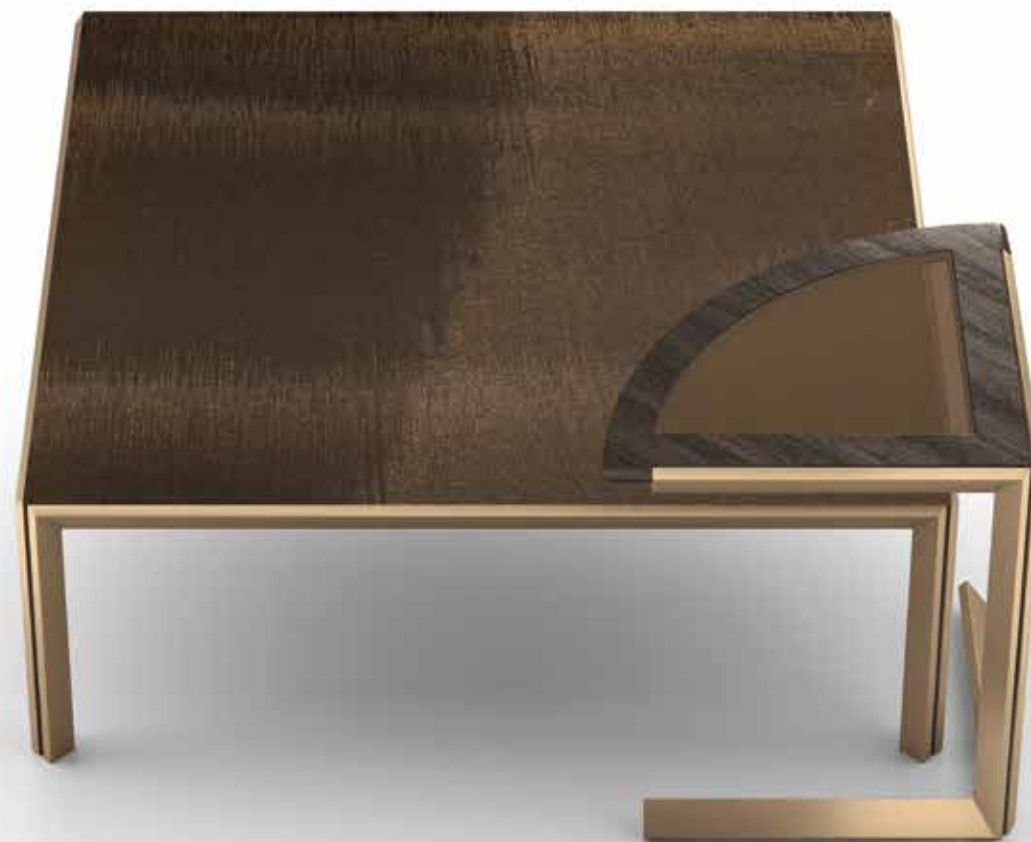
GRANDANGOLO

design by Studio Orsenigo

Struttura in tubolare di metallo con inserti in rovere massello, top in vetro temperato o ceramica (disponibile anche per esterno)

Tubular metal structure with solid oak inserts, tempered glass or ceramic top (also available for outdoor)

Stahlrohrstruktur aus verstärktem Metall mit massiven Eiche Einsätzen, Platte aus gehärtetem Glas oder Keramik (auch für den Aussenbereich erhältlich)







Struttura in metallo pieno, top in vetro temperato, ceramica, marmo (disponibile anche per esterno)

Solid metal structure, tempered glass, ceramic or marble top (also available for outdoor)

Struktur aus Vollmetall, Platte aus gehärtetem Glas, Keramik oder Marmor (auch für den Aussenbereich erhältlich)



SUSHI

design by Umberto Asnago



Struttura in tubolare di metallo combinabile in due colori , top versione rettangolare con lati curvati in vetro temperato o ceramica su supporto in MDF laccato (disponibile anche per esterno)

Metal tubular structure combinable in two colors, rectangular version top with curved sides in tempered glass or ceramic on lacquered MDF support (also available for outdoor)

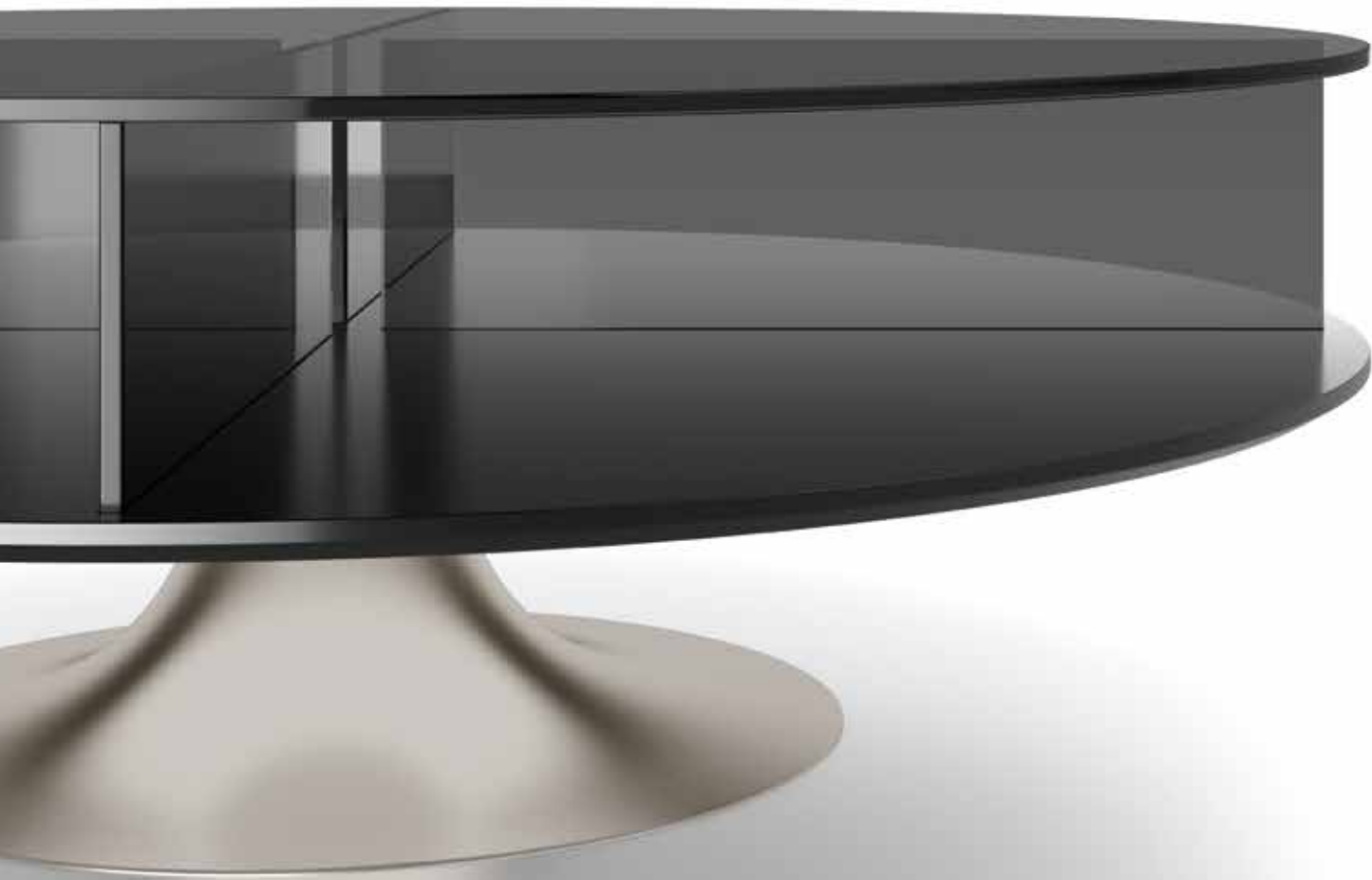
Struktur aus Metallrohr mit der Möglichkeit der zweifarbigen. Top auch rechteckig mit gebogenen Seiten, Platte aus gehärtetem Glas, Keramik auf lackiertem MDF Träger (auch für den Aussenbereich erhältlich)

INTRIGO

design by Giovanna Azzarello







Base in metallo girevole, top in vetro temperato con piano inferiore in MDF laccato opaco

Swivel metal base, tempered glass top with lower top in matt lacquered MDF

Sockel aus drehbarem Metall, Platte aus gehärtetem Glas. Untere Regal aus matt lackiertem MDF

GIRABOX

design by Giovanna Azzarello



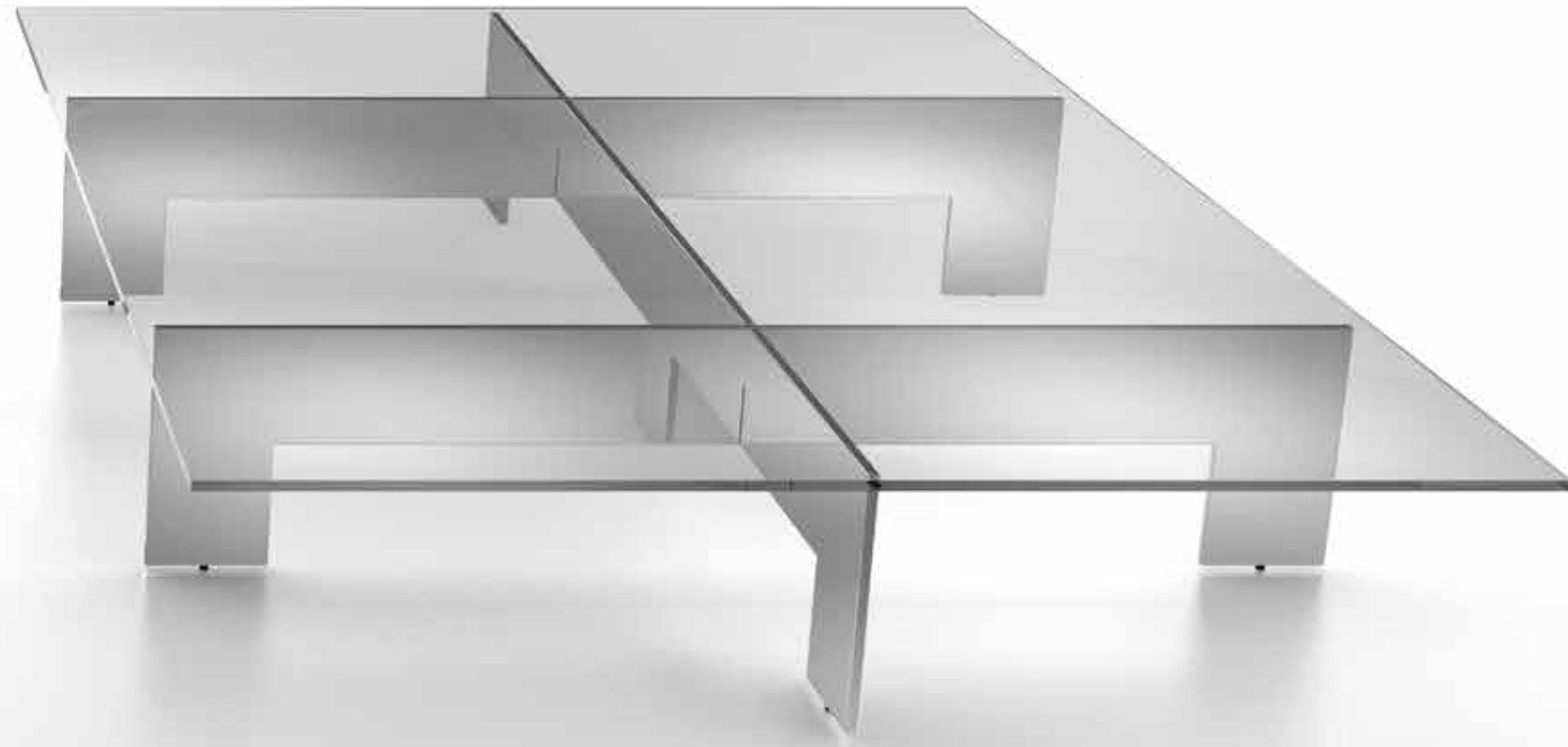
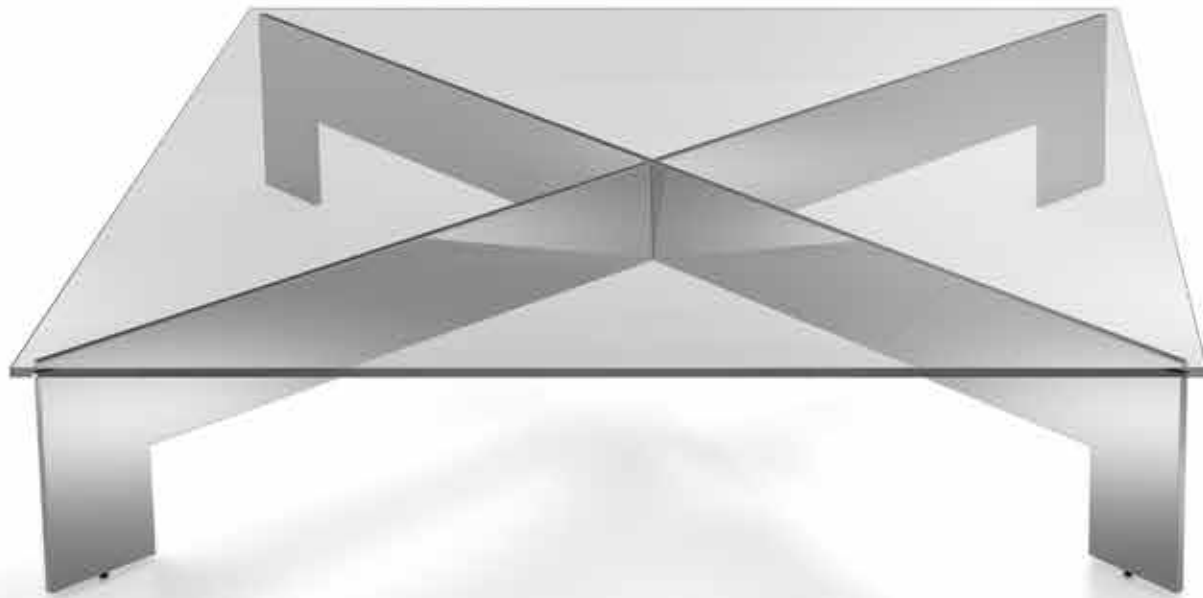
BRIDGE

design by Mauro Lipparini

Struttura in metallo pieno ad incastro, top in vetro temperato

Interlocking solid metal structure, tempered glass top

Struktur aus eingeklemmt Vollmetal. Platte aus gehärtetem Glas





TIME

design by Studio Orsenigo

Struttura in metallo, top in metallo, vetro o ceramica

Metal structure, metal, glass or ceramic top

Struktur aus Metall.
Platte aus Metall, gehärtetem Glas oder Keramik



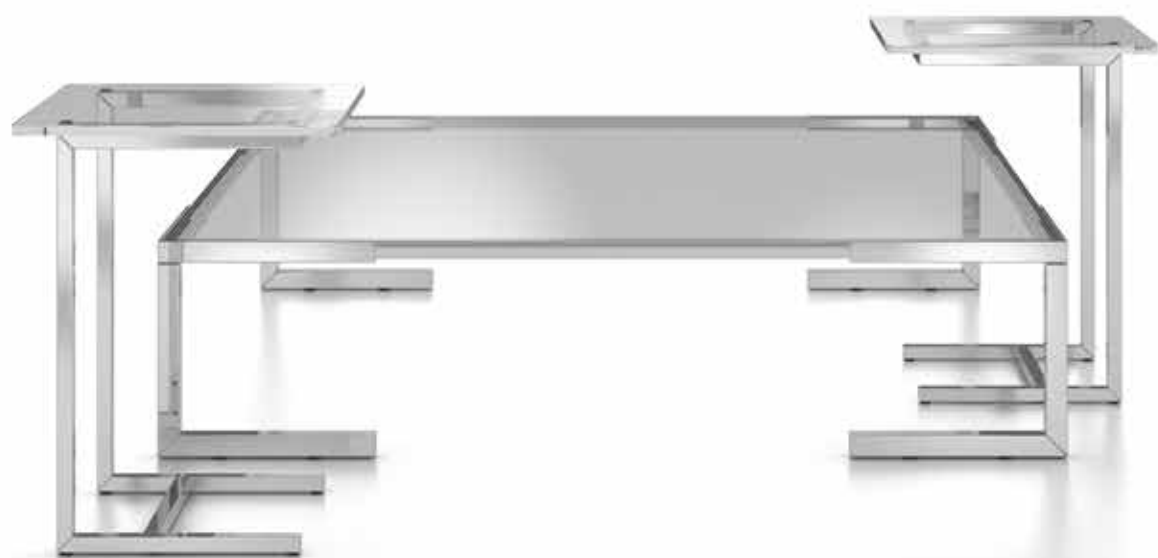
Struttura in metallo, top in vetro temperato o essenza di rovere

Metal structure, tempered glass or oak veneer top

Struktur aus Metall, Platte aus gehärtetem Glas oder Eichenholz.

TEMPURA

design by Giovanna Azzarello





PLOMB

design by Studio Orsenigo

Base e particolari in metallo,
gamba in acrilico trasparente,
top in vetro

Metal base and details,
transparent acrylic frame,
glass top

Sockel und Details aus Metall,
Transparente Acryl-Säule, Platte
aus Glas.





CROSS

design by Tonetti Design

Base in metallo, top in vetro temperato, essenza di rovere, ceramica, marmo (disponibile anche per esterno)

Metal base, tempered glass, oak veneer, ceramic or marble top (also available for outdoor)

Struktur aus Metall, Platte aus gehärtetem Glas oder Eichenholz, Keramik oder Marmor (Outdoor-Version)



PLATE

design by Massimo Malacrida

Struttura in metallo, top in metallo,
vetro temperato, ceramica

Metal structure, metal, tempered
glass or ceramic top

Struktur aus Metall, Platte aus Metall,
gehärtetem Glas oder Keramik







BASKET

design by Umberto Asnago

Struttura in metallo, top in vetro temperato,
ceramica, marmo (disponibile anche per esterno)

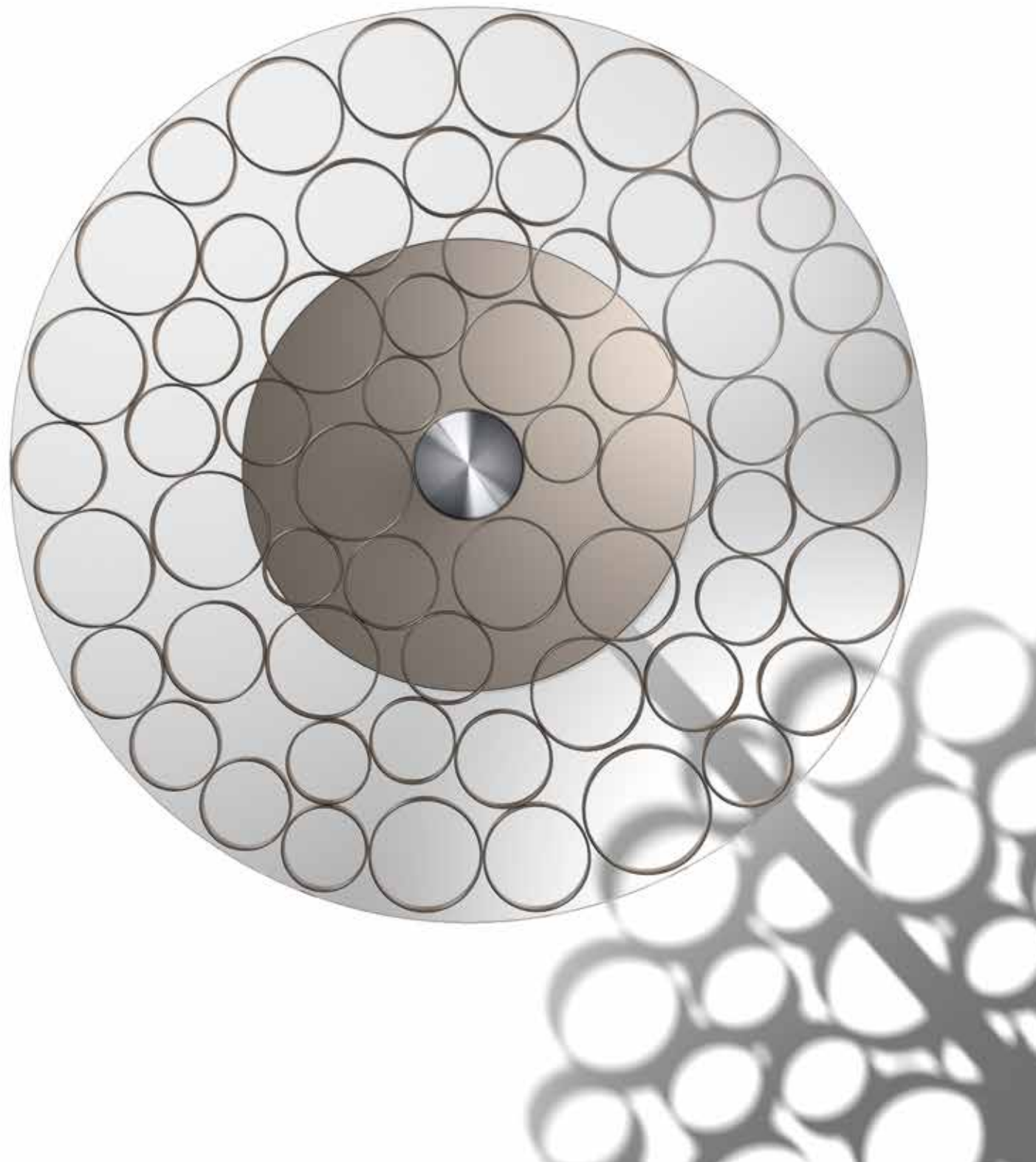
Metal structure, tempered glass, ceramic or marble
top (also available for outdoor)

Struktur aus Metall, Platte aus gehärtetem Glas,
Keramik oder Marmor (Outdoor-Version)









BUBBLE

design by Massimo Malacrida

Struttura in metallo, top in vetro temperato

Metal structure, tempered glass top

Struktur aus Metall, Platte aus gehärtetem Glas.



LIBRERIE
bookcases



TANGRAM

design by Giovanna Azzarello

Tangram



Struttura in metallo, contenitori in MDF laccato opaco o in essenza, ripiani in vetro temperato
Metal structure, matt lacquered MDF or wood storage compartments, tempered glass shelves
Struktur aus Metall, Möbel aus matt lackiert MDF, Regale aus gehärtetem Glas



INFINITY

design by Giovanna Azzarello

Struttura in metallo, ripiani in MDF
laccato opaco, essenza o cementato

Metal structure, matt lacquered MDF,
wood or cement shelves

Struktur aus Metall. Regale aus matt
lackiert MDF, Eichenholz oder Beton





Anima in metallo, pannelli in MDF laccato opaco o
 essenza, vetro temperato posizionabile a piacere
 sull'asse orizzontale

Metal core, matt lacquered or wood MDF panels,
 tempered glass that can be positioned on the
 horizontal axis at will

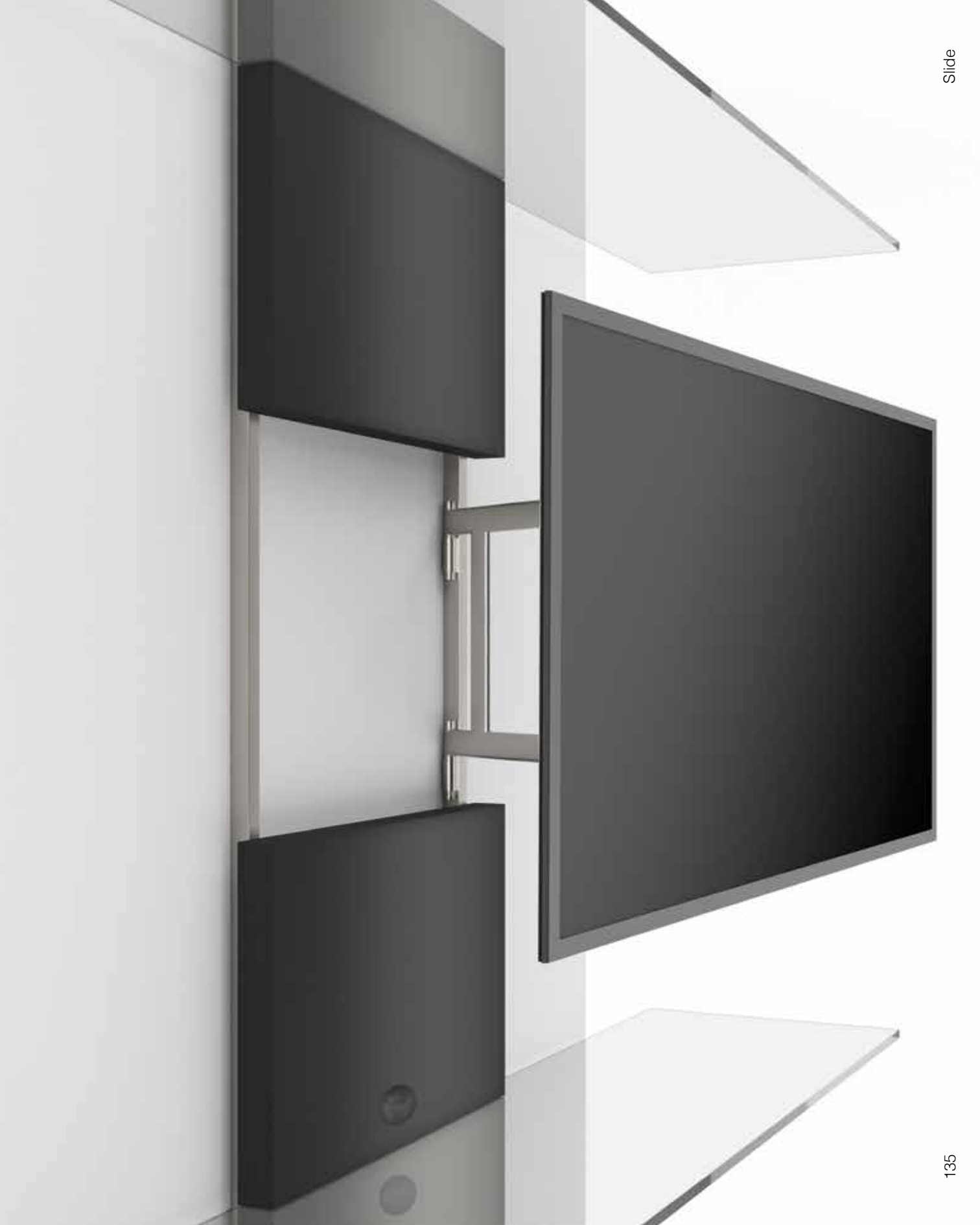
Metallkern, Brett aus matt lackiert MDF oder
 Eichenholz, Gehärtetes Glas nach Belieben auf
 der horizontalen Achse positionierbar



SLIDE

design by Gianpietro Tonetti







TAO

design by Umberto Asnago

Struttura in metallo, base e ripiani
in MDF laccato opaco o essenza

Metal structure, matt lacquered
MDF or wooden base and shelves

Struktur aus Metall, Sockel und
Regale aus matt lackiert MDF
oder Eichenholz





COMPLEMENTI
complements



RING

Ring

design by Mauro Lipparini

Struttura in metallo, contenitore
in MDF laccato opaco o essenza
cassetti a rientro ammortizzato

Metal structure, matt lacquered MDF
or wooden storage compartment,
drawers with amortized return

Struktur aus Metall, Gestell aus
matt lackiert MDF oder Eichenholz,
Schubladen mit gedämpfter Einfahrt.



143

142



Struttura in metallo pieno, top in vetro temperato, ceramica o marmo, ripiano inferiore sempre in vetro temperato

Solid metal structure, tempered glass, ceramic or marble top, lower shelf in tempered glass

Struktur aus Vollmetall, Platte aus gehärtetem Glas, Keramik oder Marmor, Unteres Regal aus gehärtetem Glas

RING

design by Mauro Lipparini





Struttura in metallo pieno, top
in vetro temperato o ceramica
(disponibile anche per esterno)

Solid metal structure, tempered
glass or ceramic top (also
available for outdoor)

Struktur aus Vollmetall, Platte
aus gehärtetem Glas oder
Keramik (Outdoor-Version)

SPIDER

design by Umberto Asnago







GRAND ANGOLO

design by Studio Orsenigo

Struttura in tubolare di metallo con inserti in rovere massello, top in vetro temperato o ceramica (disponibile anche per esterno)

Tubular metal structure with solid oak inserts, tempered glass or ceramic top (also available for outdoor)

Stahlrohrstruktur aus verstärktem Metall mit massiven Eiche Einsätzen, Platte aus gehärtetem Glas oder Keramik (auch für den Aussenbereich erhältlich)





SUSHI

design by Umberto Asnago

Struttura in metallo pieno, top in vetro temperato o
 essenza di rovere, versione anche con portaoggetti
 in lamiera piegata e cassetto

Solid metal structure, tempered glass top or oak
 veneer top, also available with object holder made
 of folded sheet metal and drawer

Struktur aus Vollmetall, Platte aus gehärtetem Glas
 oder Eichenholz, Auch mit Metall-Objektträger und
 Schublade





MARTIN

design by Studio Orsenigo

Struttura in metallo, top in essenza di rovere, cassetto ammortizzato e ribalta in cuoio con cuciture a vista

Metal structure, oak top, drawer with soft closing and leather flap with visible stitching

Struktur aus Vollmetall, Platte aus Eichenholz.
Schubladen mit gedämpfter Einfahrt, Leder- Klappe mit sichtbaren Nähten





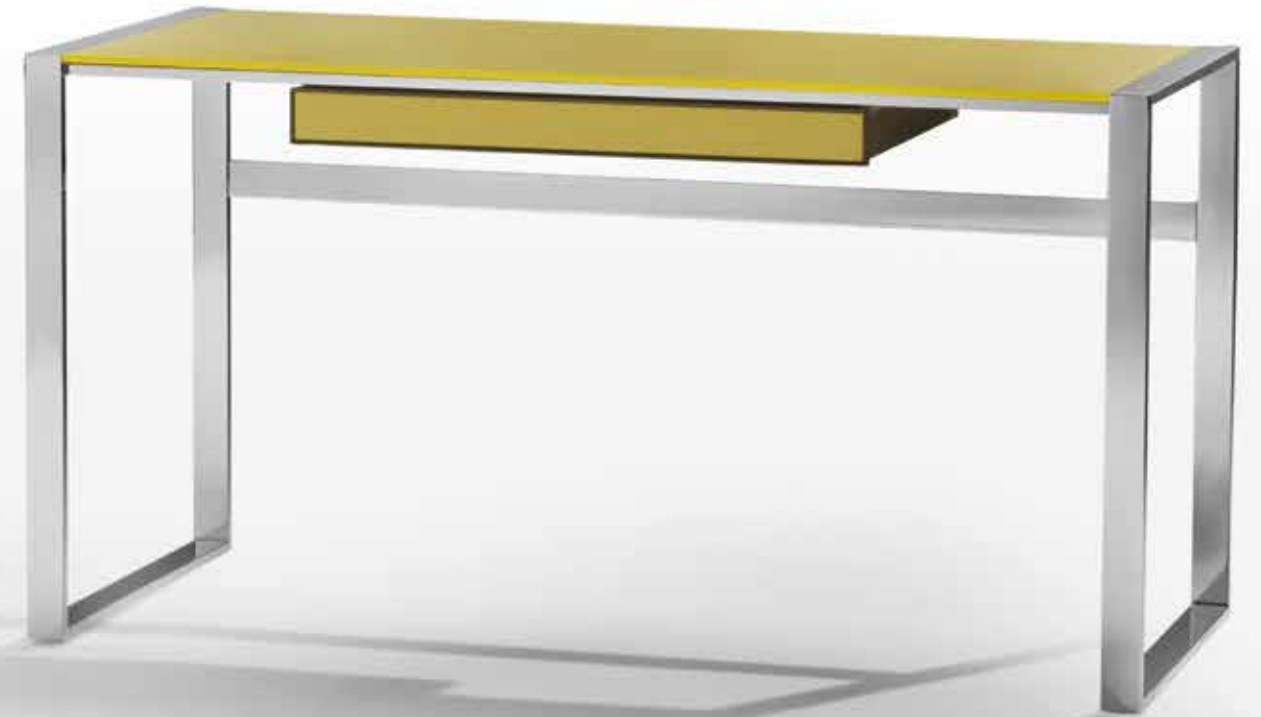
DESK

design by Studio Orsenigo

Struttura in metallo, top in vetro temperato o essenza di rovere con inserto in pelle, frontalino cassetto in vetro o neutro

Metal structure, tempered glass or oak wood top with leather insert, glass or neutral front drawer

Struktur aus Metall, Platte aus gehärtetem Glas oder Eichenholz mit Ledereinsatz. Schubladenfront aus Glas oder neutral





FLAT

design by Studio Umberto Asnago

Struttura in metallo, top in essenza di rovere con ribalta in cuoio, alzata in vetro bronzo e cassetti in rovere

Metal structure, oak wood top with leather flap, bronze glass shelf and oak drawers

Struktur aus Metall, Platte aus Eichenholz mit Leder- Klappe, Kleines Regal aus bronze Glas, Schubladen aus Eichenholz.

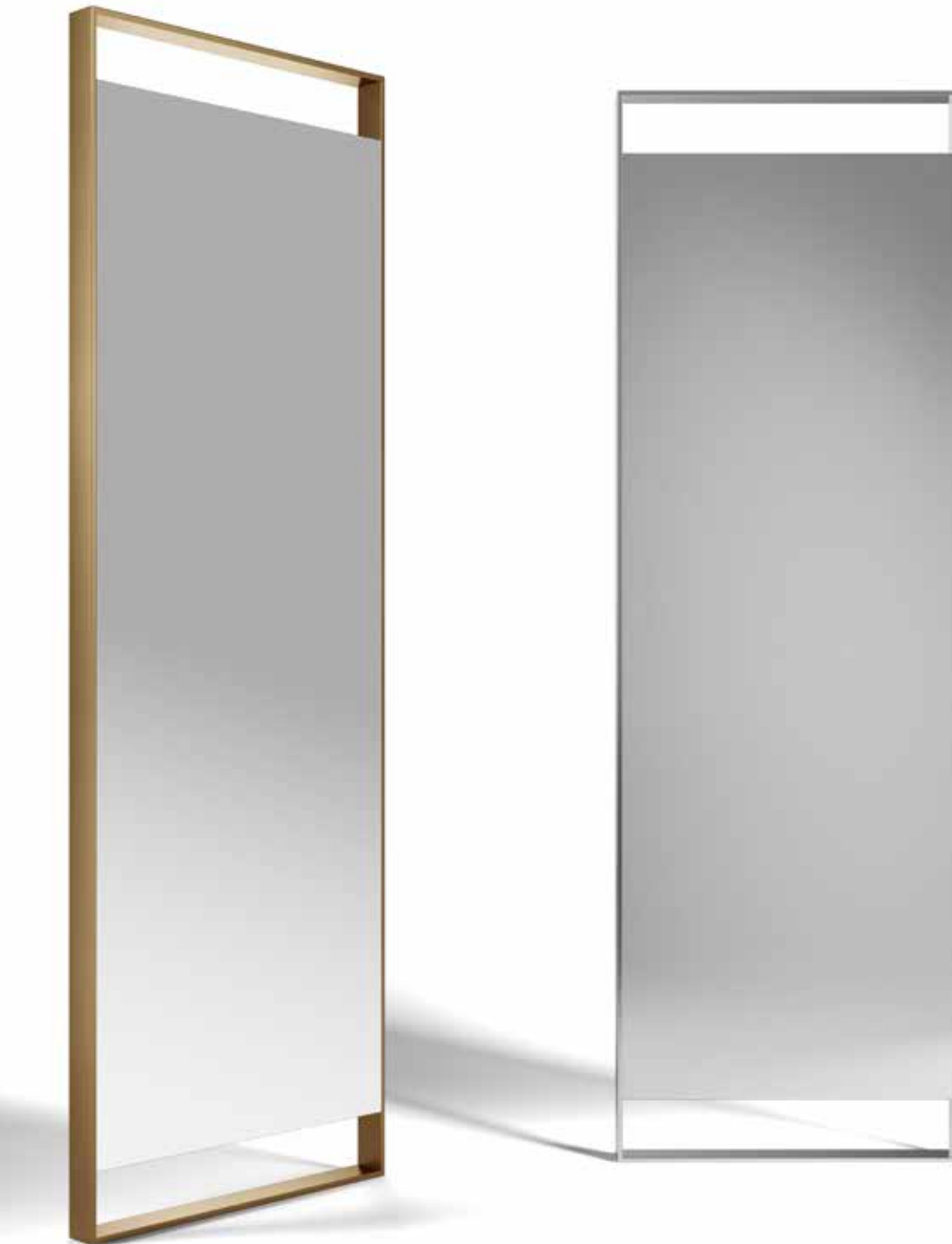




RING

Ring

design by Mauro Lipparini



Struttura in metallo,
posizionabile in
verticale o orizzontale

Metal structure, can
be positioned vertically
or horizontally

Struktur aus Metall,
vertikal oder horizontal
positionierbar.

GRANDA

design by Studio Orsenigo

ANGOLO

Struttura in metallo, posizionabile
in verticale o orizzontale

Metal structure, can be positioned
vertically or horizontally

Struktur aus Metall, vertikal oder
horizontal positionierbar





GERLA

design by Studio Orsenigo

Struttura in tubolare di metallo laccato a forno
Tubular structure of oven-lacquered metal
Stahlrohrstruktur aus Ofenlackiertes Metall



SCHEDE TECNICHE
technical sheet

SPIDER



TABLE
 180X108 h.74 cm
 200X108 h.74 cm
 220X118 h.74 cm
 250X118 h.74 cm

STEEL STRUCTURE finishes F21, F05, F90, F94, F97 outdoor F94, F97
 TOP ceramic plate 12 mm; lacquered tempered glass 10 mm

BULL



TABLE
 fixed extendible
 180x100 h.74 cm 180/230x100 h.74 cm
 200x100 h.74 cm 200/257x100 h.74 cm
 300x100 h.74 cm 200/270x100 h.74 cm

STEEL STRUCTURE finishes F88, F63, F94, F97
 TOP ceramic plate 6 mm with backing wood 14 mm (total 20 mm)
 EXTENSION ceramic 6 mm with backing wood 12 mm (total 18 mm)

RING

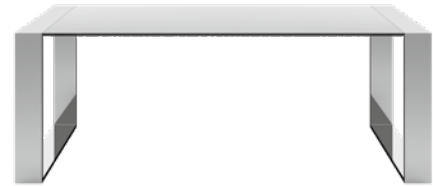


TABLE
 160x90 h.72 cm
 180x90 h.72 cm
 200x90 h.72 cm
 220x90 h.72 cm

STEEL STRUCTURE finishes F21, F33, F05, F90, F63, F94, F97
 TOP clear transp. tempered glass 15 mm; juta, tela synt and lacquered tempered glass 10 mm;
 ceramic plate 6mm with backing glass 6mm; ceramic plate 12mm

KYOTO



TABLE
 fixed extendible
 180x90 h.75 cm 175/241x90 h.75 cm
 200x100 h.75 cm 200/270x100 h.75 cm
 250x100 h.75 cm 250/320x100 h.75 cm
 300x120 h.75 cm 250/320x120 h.75 cm
 150x150 h.75 cm

STEEL STRUCTURE finishes F21, F33, F05, F90
 TOP clear transp. tempered glass 15 mm; grey or bronze transp. tempered glass 12 mm; oak 30 mm with oak extension; slate 30 mm with anthracite lacquered MDF extension

FLOW



TABLE
 150x150 h.74 cm 200x100 h.74 cm
 160x160 h.74 cm 220x110 h.74 cm
 180x90 h.74 cm Ø150 h.74 cm

STEEL STRUCTURE finishes F21, F33, F05, F90
 TOP lacquered, juta, mono tempered glass 10 mm

KYOTO

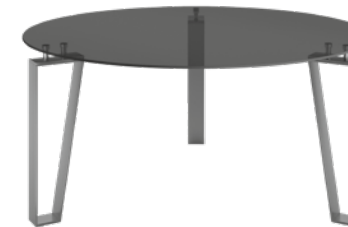


TABLE
 Ø158 h.74 cm
 Ø180 h.74 cm

STEEL STRUCTURE finishes F21, F33, F05, F90
 TOP clear transparent tempered glass 15 mm, grey or bronze transparent tempered glass 12 mm

GRANDANGOLO



TABLE
 140x90 h.72 cm 250x100 h.72 cm
 160x90 h.72 cm 295x120 h.72 cm
 180x90 h.72 cm 100x100 h.72 cm
 200x90 h.72 cm 120x120 h.72 cm
 220x90 h.72 cm 140x140 h.72 cm

STEEL STRUCTURE finishes F05, F90, F94, F97, outdoor F94, F97,
 solid dark-stained oak insert
 TOP grey or bronze transparent tempered glass 10 mm; mono glass 10 mm
 ceramic plate 6 mm with backing wood 6mm; ceramic plate 12 mm

INTRIGO



TABLE
 Ø140 h.72 cm
 Ø150 h.72 cm
 Ø160 h.72 cm
 elliptic
 200x100 h.72 cm
 220x110 h.72 cm

STEEL STRUCTURE finishes F94, F97 also combined together;
 outdoor F94, F97
 TOP grey or bronze transparent tempered glass 12 mm; ceramic plate 6 mm with backing wood 24 mm; ceramic plate 12 mm

SUSHI



TABLE
 Ø140 h.74 cm
 Ø160 h.74 cm
 Ø180 h.74 cm

STEEL STRUCTURE finishes F21, F33, F05, F90, F63, F94, F97
 TOP lacquered tempered glass 10 mm; ceramic plate 6 mm with backing wood 6mm; ceramic plate 12 mm; marble 20 mm

AIR



TABLE
 Ø150 h.75 cm
 Ø160 h.75 cm
 220x110 h.75 cm

STEEL STRUCTURE finishes F63 F94, F97, outdoor F94, F97
 TOP grey or bronze transparent tempered glass 12 mm; ceramic plate 6 mm with MDF backing 24 mm; ceramic plate 12 mm

CHAZUKA



CHAIR
48x52 h.84 cm

STEEL STRUCTURE finishes F21, F33, F05, F90, F94, F97
SEAT AND BACKREST hide with visible stitching; standard leather or customer's selection on request
further information_www.orsenigo.com

CHAZUKA



CHAIR
48x52 h.84 cm

STEEL STRUCTURE finishes F21, F33, F05, F90, F94, F97
SEAT AND BACKREST hide with visible stitching; standard leather or customer's selection on request
further information_www.orsenigo.com

EMME



CHAIR
68x64 h.85 cm

STEEL STRUCTURE finishes F05, F115, F117, F94, F97
SHELL polyurethane foam
UPHOLSTERY fabric; leather; customer's selection on request
further information_www.orsenigo.com

SOFT



CHAIR
52x40 h.95 cm

STEEL STRUCTURE finishes F21, F05, F90, F94, F97
SEAT AND BACKREST wood and double-density polyurethane foam
UPHOLSTERY fabric; leather; customer's selection on request
further information_www.orsenigo.com

IN&OUT LEATHER



CHAIR
47x54 h.90 cm

STEEL STRUCTURE finishes F88, F94, F97
REMOVABLE CUSHION leather; customer's selection on request
further information_www.orsenigo.com

IN&OUT STRING



CHAIR
47x54 h.90 cm

STEEL STRUCTURE finishes F88, F94, F97 outdoor F94, F97
STRING cream, taupè, tobacco or green processed cotton

FUJIYAMA



SOFA
130x90 h.70 cm
optional
MDF armrests,- finishes light or dark oak

STEEL STRUCTURE finishes F21, F33, F05, F90, F94, F97
PADDING double-density polyurethane foam with elastic straps
UPHOLSTERY fabric; leather; customer's selection on request
further information_www.orsenigo.com

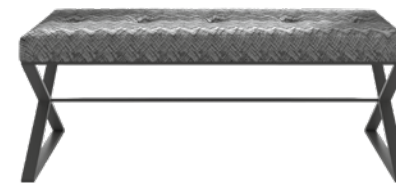
FUJIYAMA



ARMCHAIR
69x90 h.70 cm
optional
MDF armrests,- finishes light or dark oak

STEEL STRUCTURE finishes F21, F33, F05, F90, F94, F97
PADDING double-density polyurethane foam with elastic straps
UPHOLSTERY fabric; leather; customer's selection on request
further information_www.orsenigo.com

ICS



BENCH
120x40 h.44 cm

STEEL STRUCTURE finishes F21, F33, F90, F94, F97
PADDING polyurethane foam
UPHOLSTERY fabric; leather; customer's selection on request
further information_www.orsenigo.com

PYRO



POUF
115x115 h.45 cm

STEEL BASE finishes F21, F05; F90
WOODEN STRUCTURE padded with polyurethane foam
UPHOLSTERY fabric; leather; customer's selection on request
further information_www.orsenigo.com

PACO



POUF
Ø40 h.45 cm

STEEL BASE finishes F21, F05; F90
WOODEN STRUCTURE padded with polyurethane foam
UPHOLSTERY fabric; leather; customer's selection on request
further information_www.orsenigo.com

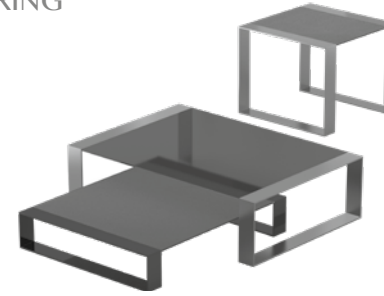
PEDER



POUF
Ø40 h.60 cm

STEEL BASE AND BACKREST finishes F21, F05; F90
WOODEN STRUCTURE padded with polyurethane foam
UPHOLSTERY fabric; leather; customer's selection on request
further information_www.orsenigo.com

RING



SIDE TABLE
90x90 h.20 cm 100x70 h.35 cm
130x90 h.20 cm 130x70 h.35 cm
150x90 h.20 cm
90x90 h.35 cm
100x70 h.20 cm 130x90 h.35 cm
130x70 h.20 cm 150x90 h.35 cm
70x70 h.55 cm 120x120 h.35 cm

STEEL STRUCTURE finishes F21, F33, F05, F90, F63, F94, F97
TOP clear, grey or bronze transparent tempered glass 12 mm; juta, mono, tela synt or lacquered tempered glass 10 mm; ceramic plate 6 mm with backing glass 6 mm; ceramic plate 12 mm; marble 20 mm

SPIDER



SIDE TABLE
60x60 h.45 cm
130x70 h.40 cm
130x90 h.40 cm

STEEL STRUCTURE finishes F21, F05, F90, F94, F97, outdoor F94, F97
TOP grey or bronze transparent tempered glass 10 mm; ceramic plate 6 mm with backing glass 6 mm; ceramic plate 12 mm

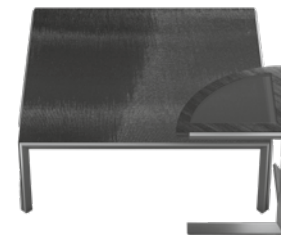
FLOW



SIDE TABLE
80x80 h.35/42cm 130x70 h.35/42cm
90x90 h.35/42cm 130x90 h.35/42cm
110x110 h.35/42cm 150x90 h.35/42cm
130x130 h.35/42cm 120x60 h.35/42cm
Ø 120 h 35/42cm

STEEL STRUCTURE finishes F21, F33, F05, F90
TOP lacquered, juta or mono 10 mm tempered glass

GRANDANGOLO



SIDE TABLE
120x120 h.35 cm 48x48 h.40 cm
130x90 h.35 cm 60x60 h.45 cm
130x70 h.35 cm corner table
90x90 h.35 cm 45x45 h.50 cm

STEEL STRUCTURE finishes F05, F90, F94, F97, outdoor F94, F97, solid dark-stained oak insert mono glass 8 mm
TOP clear, grey or bronze transp. tempered glass 8 mm; lacquered tempered glass 8 mm; ceramic plate 6 mm with backing wood; ceramic plate 12 mm

SUSHI



SIDE TABLE
Ø60 h.35 cm Ø100 h.35 cm
60x60 h.35 cm 100x100 h.35cm
Ø60 h.56 cm Ø120 h.35 cm
60x60 h.56 cm 120x60 h.35 cm
Ø90 h.35 cm 120x80 h.35 cm
90x90 h.35 cm 120x120 h.35 cm

STEEL STRUCTURE finishes F21, F33, F05, F90, F63, F94, F97; outdoor F94, F97
TOP grey or bronze transp. tempered glass 8/10 mm, lacquered tempered glass 8/10 mm; ceramic plate 6 mm with backing wood; ceramic plate 12 mm; marble 20 mm

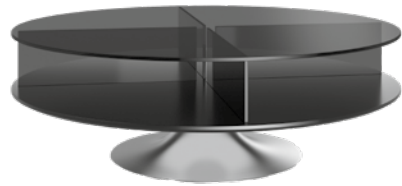
INTRIGO



SIDE TABLE
Ø120 h.40 cm
Ø60 h.53 cm
elliptic
130x90 h40 cm

STEEL STRUCTURE finishes F94, F97
also combined together,
outdoor F94, F97
TOP grey or bronze transparent tempe-
red glass 12 mm; ceramic plate 6 mm
with backing wood 19 mm;
ceramic plate 12 mm

GIRABOX



SIDE TABLE
Ø120 h.40 cm

SWIVELLING STEEL BASE
finishes F21
LOWER SHELF white or black lacque-
red MDF
TOP AND DIVIDER clear or grey tran-
sparent tempered glass 10 mm

BRIDGE



SIDE TABLE
120x80 h.30 cm
160x120 h.30 cm

STEEL STRUCTURE finishes F21, F33,
F94, F97
TOP clear transp. tempered glass
10 mm

TIME



SIDE TABLE
Ø35 h.45 cm
Ø35 h.50 cm

STEEL STRUCTURE finishes F21, F04,
F05, F90, F94, F97
TOP steel F21, F04, F05, F90 F94, F97;
ceramic 6 mm with backing steel

TEMPURA



SIDE TABLE
100x100 h.30 cm
130x70 h.30 cm
130x130 h.30 cm
40x40 h.53 cm

STEEL STRUCTURE finishes F21
TOP clear transparent tempered glass
8 mm; dark oak 25 mm

PLOMB



SIDE TABLE
Ø45 h.50 cm

STRUCTURE transparent acrylic with
steel details F04, F90
TOP clear, grey or bronze transparent
tempered glass; mono or juta tempered
glass 10 mm

CROSS



SIDE TABLE
90x90 h.32 cm
130x70 h.32 cm
Ø 60 h.57 cm

STEEL STRUCTURE finishes F33, F05,
F90,F94, F97, outdoor F94, F97
TOP dark oak 20 mm; ceramic plate 6
mm with backing wood 14 mm; ceramic
plate 12 mm; marble 20 mm

PLATE



SIDE TABLE
Ø45 h.55 cm
40x40 h.55 cm
only for round
table ring on top
edge

STEEL STRUCTURE finishes F21, F04,
F05, F90 F94, F97, outdoor F94, F97
TOP steel F21, F04, F05, F90, F94, F97;
grey or bronze transparent tempered
glass 10 mm, juta tempered glass 10
mm; ceramic plate 6 mm with backing
steel; ceramic plate 12 mm

BASKET



SIDE TABLE
Ø40 h.34-44-54 cm

STEEL STRUCTURE finishes F21, F04,
F33, F05, F63, F94, F97,
outdoor F94, F97
TOP clear, grey or bronze transparent
tempered glass 8 mm, juta or tela synt
tempered glass 10 mm; ceramic plate
6 mm with backing steel; ceramic plate
12 mm; marble 20 mm
tables can be purchased individually

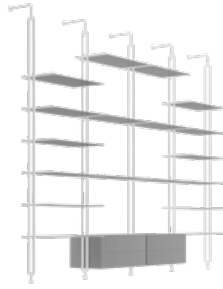
BUBBLE



SIDE TABLE
Ø40 h.50 cm
Ø45 h.35 cm

STEEL STRUCTURE finishes F21, F05
TOP clear or grey transparent tempe-
red glass 8 mm

TANGRAM



BOOKCASE
max height 320 cm
drawer
70x50 h.42 cm
100x50 h.42 cm
drawer two leafs
70x50 h.42 cm
100x50 h.42 cm

shelves
70x35 cm
70x50 cm
100x35 cm
100x50 cm

STEEL STRUCTURE ceiling or wall hanging, finishes F115, F117, F88, F94, F97
DRAWERS/CABINET matt lacquered MDF, Ral colours on www.orsenigo.com
SHELVES clear transparent glass or lacquered glass with hinged metal frame, passoforo 19cm

INFINITY



BOOKCASE
structure module
100x52 h.250
shelves
60x35 h3 cm
95x35 h3 cm
107x35 h3 cm

STEEL STRUCTURE finishes F63, F88, F94, F97
SHELVES (layout as desired) matt lacquered MDF 30 mm, Ral colours on www.orsenigo.com; dark oak 30 mm; concrete 30 mm
customised dimensions on request

SLIDE



BOOKCASE
structure
140x32 h.189 cm
140x32 h.43 cm
140x32 h.43 cm

SHELVES
max lenght 140cm

metal structure for wall hanging
FRONT PANELS matt lacquered MDF, Ral colours on www.orsenigo.com
SHELVES clear tempered glass 10 mm, distance between crystals 30, 5 cm
max load capacity 20 kg per shelf

SLIDE TV

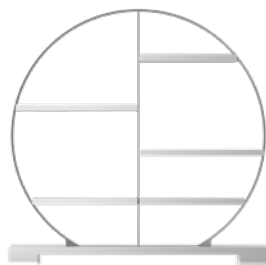


BOOKCASE TV
structure
140x36 h.170 cm

SHELVES
max lenght 140cm

metal structure for wall hanging
FRONT PANELS matt lacquered MDF, Ral colours on www.orsenigo.com
SHELVES clear tempered glass 10 mm, distance between crystals 30, 5 cm
max load capacity 20 kg per shelf
adjustable TV stand with 2 brackets
maximum load capacity of TV panel 40 kg
cable holes and positioning of sockets inside the structure on request

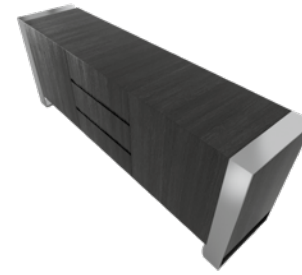
TAO



BOOKCASE
round structure
180x35 h.176 cm
square structure
180x35 h.176 cm

STEEL STRUCTURE finishes F21, F33, F05, F90, F94, F97
BASE matt lacquered or wooden MDF, Ral colours on www.orsenigo.com
SHELVES matt lacquered or wooden MDF 40 mm, Ral colours on www.orsenigo.com

RING



SIDEBOARD
200x45 h.75 cm

STEEL STRUCTURE finishes F21, F33, F05, F90, F94, F97
WOODEN PARTS dark oak ; matt lacquered MDF
Ral colours on www.orsenigo.com;
45° drawer with soft close

RING



CONSOLE
120x40 h.74 cm two shelves
140x40 h.74 cm 120x40 h.74 cm
150x40 h.74 cm 140x40 h.74 cm

STEEL STRUCTURE finishes F21, F33, F05, F90, F63, F94, F97
TOP clear, grey or bronze transp. tempered glass 12 mm; juta, mono, tela synt or lacquered tempered glass 10 mm; ceramic plate 12 mm; marble 20 mm
SECOND SHELF juta, mono or tela synt tempered glass 10 mm; clear transparent tempered glass 10 mm

SPIDER



CONSOLE
150x40 h.74 cm

STEEL STRUCTURE finishes F21, F05, F90, F94, F97, outdoor F94, F97
TOP grey or bronze transparent tempered glass 8 mm; ceramic plate 6 mm with backing glass 6 mm; ceramic plate 12 mm

GRANDANGOLO



CONSOLE
150x40 h.75 cm

STEEL STRUCTURE, finishes F05, F90, F94, F97, outdoor F94, F97, solid dark-stained oak insert
TOP grey or bronze transparent tempered glass 8 mm ; lacquered tempered glass 8 mm; ceramic plate 6 mm; ceramic plate 12 mm

SUSHI



CONSOLE
180x45 h.84 cm

STEEL STRUCTURE finishes F21, F33, F05, F90, F63, F94, F97
TOP clear, grey or bronze transparent tempered glass; lacquered tempered glass 10 mm; dark oak 80 mm
available with matching steel tray and dark oak drawer

MARTIN



CONSOLE
140x40 h.80 cm

STEEL STRUCTURE finishes F21,
F05, F90
TOP dark oak with brown leather fol-
ding top and visible stitching
DRAWER dark oak with soft closure

RING



MIRROR
70 h.100 cm

60x6 h.188 cm

STEEL STRUCTURE finishes F21, F33,
F05, F90, F63, F94, F97
wall hangin with hook and fischer
supplied

GRANDANGOLO



MIRROR
130 x h.80 cm

70 x h.190 cm

STEEL STRUCTURE finishes F05, F90,
F94, F97
wall hangin with hook and fischer
supplied

DESK



DESK
140x60 h.74 cm
150x70 h.74 cm

STEEL STRUCTURE finishes F21,
F33, F05, F90, F94, F97
TOP clear, grey or bronze transp.tem-
pered glass 10 mm; lacquered, juta or
mono tempered glass 10 mm; dark oak
with sand-coloured leather insert
DRAWER solid dark oak with front in
tempered glass combined with top or
dark oak

FLAT



DESK
140x60 h.75 cm

STEEL STRUCTURE finishes F05,
F90, F63, F94, F97
TOP dark oak with sand-coloured lea-
ther insert and flippable compartent
DRAWER steel combined at structure
SHELF bronze transp. tempered glass

GERLA



CLOTHES HANGER
Ø50 h.172 cm

STEEL STRUCTURE finishes F117,
F88, F94, F97



MATERIALI

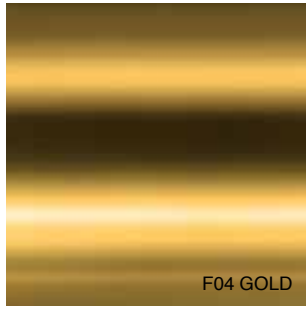
materials



F90 BRONZE



F63 RAW METAL



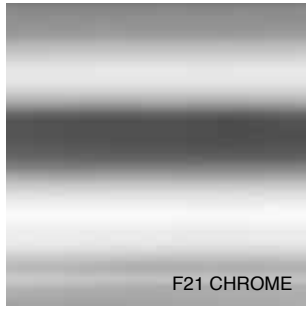
F04 GOLD



F24 BRUSHED GOLD



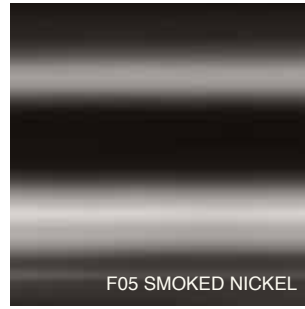
F74 SAVANA DARK



F21 CHROME



F33 MATT BRUSHED NICKEL



F05 SMOKED NICKEL



F55 BRUSHED SMOKED NICKEL



F88 LACQUERED ANTHRACITE



F117 LACQUERED BLACK



F115 LACQUERED WHITE



LACQUERED BROWN



F94 LIGHT HEMATITE



F97 DARK HEMATITE



JUTA YELLOW



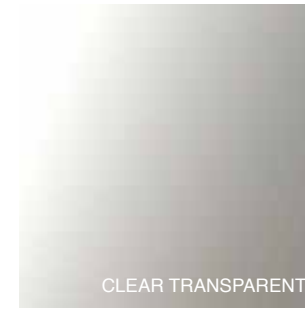
JUTA WHITE



JUTA GREY



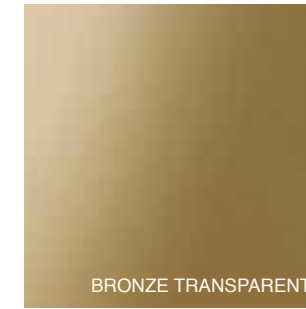
JUTA BRONZE



CLEAR TRANSPARENT



GREY TRANSPARENT



BRONZE TRANSPARENT



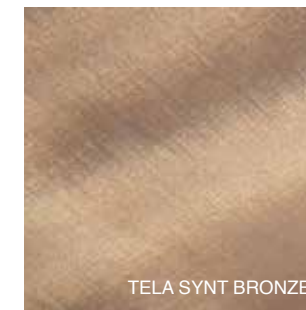
MONO GREY



MONO BRONZE



TELA SYNT SILVER



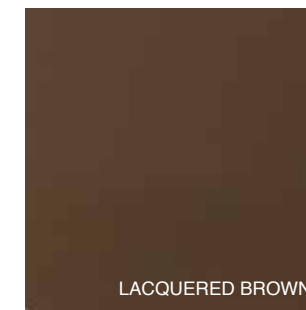
TELA SYNT BRONZE



LACQUERED WHITE 9010



LACQUERED BLACK



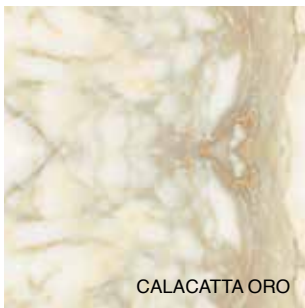
LACQUERED BROWN



GRIGIO PERLA



BIANCO CARRARA



CALACATTA ORO



NERO MARQUINIA



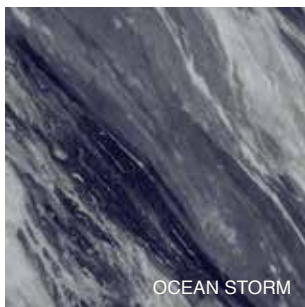
EMPERADOR DARK



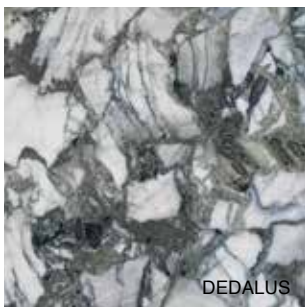
EMPERADOR LIGHT



VERDE ALPI



OCEAN STORM



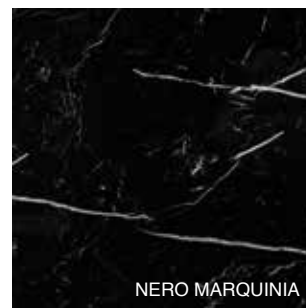
DEDALUS



EMPERADOR LIGHT



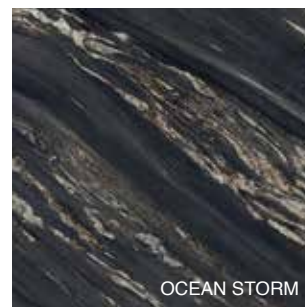
EMPERADOR DARK



NERO MARQUINIA



DEDALUS



OCEAN STORM



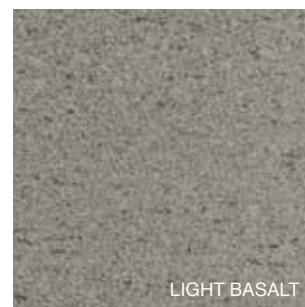
VERDE ALPI



OXIDE BROWN



OXIDE BLACK



LIGHT BASALT



DARK BASALT



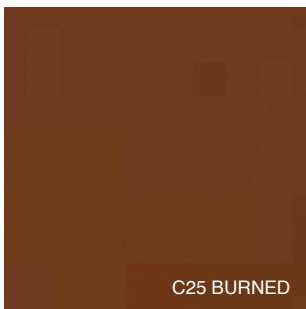
C10 OPTICAL WHITE



C30 CREAM



C16 NATURAL



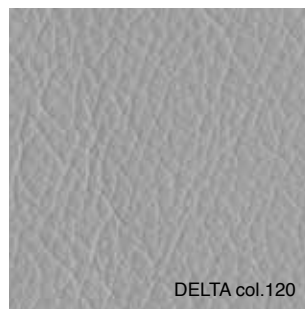
C25 BURNED



DELTA col.010



DELTA col.106



DELTA col.120



DELTA col. BLACK



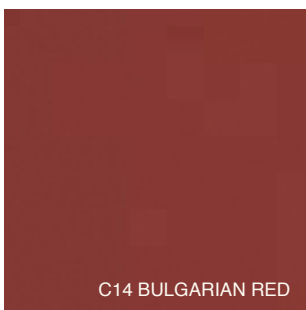
C17 SAND



C21 TAUPE'



C19 CHOCOLATE



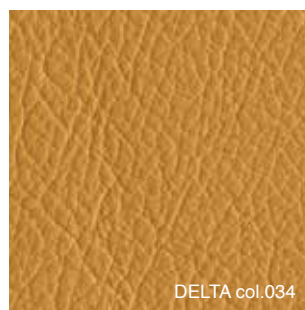
C14 BULGARIAN RED



DELTA col.432



DELTA col.035



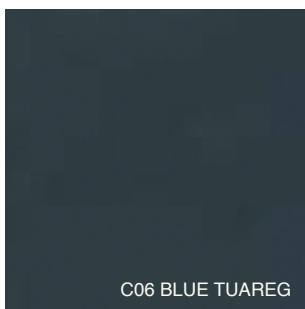
DELTA col.034



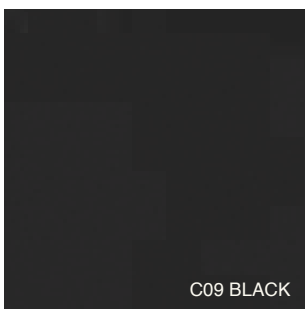
DELTA col.0157



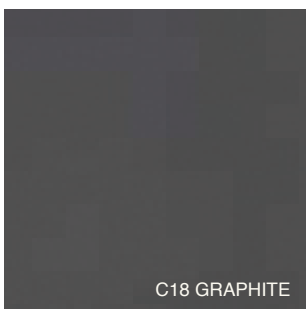
C13 MARINE BLUE



C06 BLUE TUAREG



C09 BLACK



C18 GRAPHITE



DELTA col.017



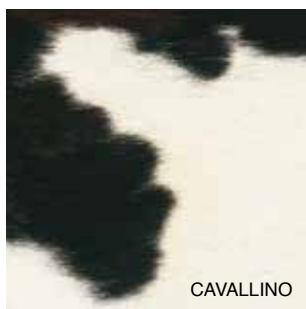
DELTA col.128



DELTA col.129



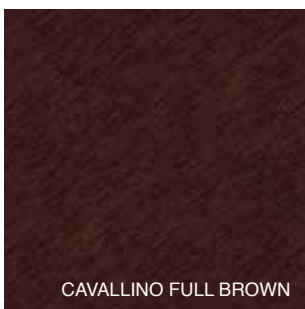
DELTA col.130



CAVALLINO



CAVALLINO CASTANO



CAVALLINO FULL BROWN



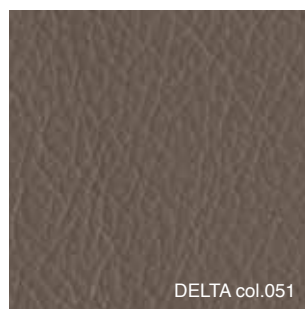
CAVALLINO BLACK



DELTA col.030



DELTA col.202



DELTA col.051

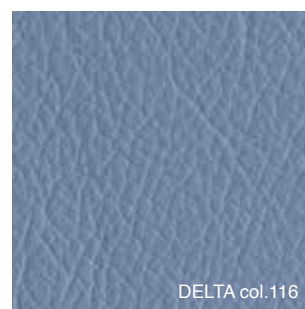


DELTA col.029

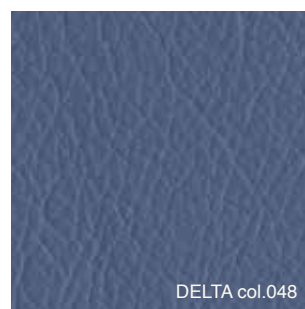
STRING CREAM
STRING TAUPE'



STRING GREEN
STRING TOBACCO



DELTA col.116



DELTA col.048



DELTA col.111



DELTA col.118



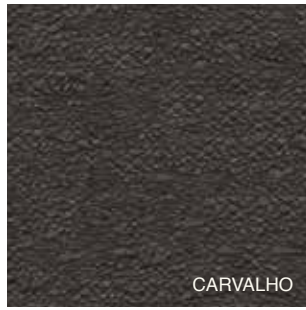
DARK OAK



LIGHT OAK



WALNUT



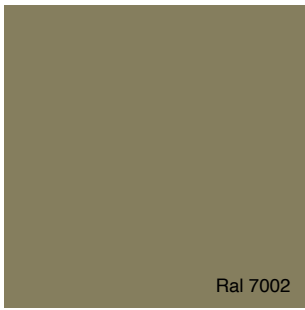
CARVALHO



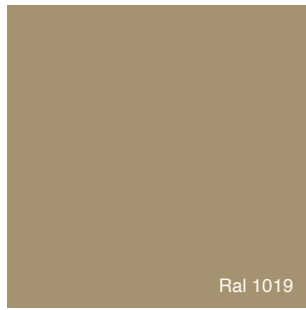
Ral 9010



Ral 7032



Ral 7002



Ral 1019



Ral 8025



Ral 8025



Ral 8019



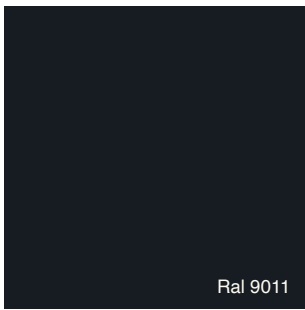
Ral 8022



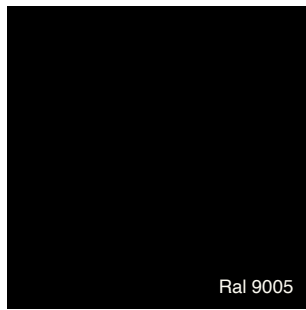
Ral 7044



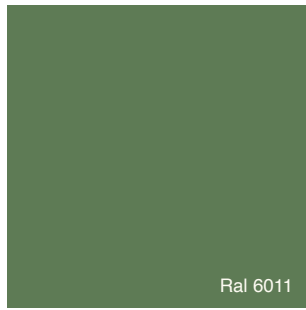
Ral 7037



Ral 9011



Ral 9005



Ral 6011



Ral 6012



Ral 5020



Ral 5013

ULTERIORI INFORMAZIONI SUI MATERIALI
ADDITIONAL INFORMATION ABOUT MATERIALS
WEITERE INFORMATIONEN ZU MATERIALIE

TESSUTI
FABRICS
STOFFEN

campionario sul sito www.orsenigo.com
see samples on www.orsenigo.com
siehe muster auf www.orsenigo.com

PELLI
LEATHER
LEDER

campionario sul sito www.orsenigo.com
see samples on www.orsenigo.com
siehe muster auf www.orsenigo.com

RAL LACCATO OPACO
MATT LACQUERED RAL
RAL MATTE LACQUERED

campionario sul sito www.orsenigo.com
see samples on www.orsenigo.com
siehe muster auf www.orsenigo.com



WORLD PRESENCE

- ALGERIA
- BELGIUM
- BRAZIL
- BULGARIA
- (Alberta; Quebec; Ontario) CANADA
- CHINA
- CYPRUS
- COLOMBIA
- EGYPT
- UNITED ARAB EMIRATES (DUBAI)
- FINLAND
- FRANCE
- GERMANY
- JAPAN
- GREECE
- INDIA
- IRELAND
- ISRAEL
- KAZAKHSTAN
- KWAIT
- LEBANON
- LIBYA
- LITHUANIA
- MOROCCO
- MAURITANIA
- HOLLAND
- PUERTO RICO
- QATAR
- RUSSIA
- SERBIA
- SPAIN
- SOUTH AFRICA
- SWISS
- TAIWAN
- TUNISIA
- TURKEY
- UKRAINE
- UK
- USA (California, Texas , New York , Georgia, North Carolina)
- VIETNAM

CONTACTS

Orsenigo S.r.l
via Montesolaro,27
Cantù (CO) 22063, Italy

+39 031 71 48 92
+39 031 71 19 96

info@orsenigo.com
www.orsenigo.com

CREDITI

credits

Projects and visual 3D

Azimak

Styling

Massimo Malacrida

Margherita Portesani

Studio Orsenigo

Graphic design

Margherita Portesani

Prepress

Monogramma Graphic Lab

Print

Grafica Gioia

Copyright ©

Fratelli Orsenigo

March 2022

Follow us

@orsenigo_fratelli

Descriptions and pictures of products included in this catalogue have an indicative value only and are not binding for products' use. F.lli Orsenigo reserves the right to modify their products without prior notification. For further technical information of the products see www.orsenigo.com.

SINCE
1960
DESIGNED & MADE IN ITALY

www.orsenigo.com